



**BAY AREA  
AIR QUALITY  
MANAGEMENT  
DISTRICT**

*Committed to Achieving Clean Air to Protect  
the Public's Health and the Environment*

# **CARE Mitigation Action Plan**

**Phil Martien, Ph.D.**

**Bay Area Air Quality Management District**

**CARE Task Force Meeting**

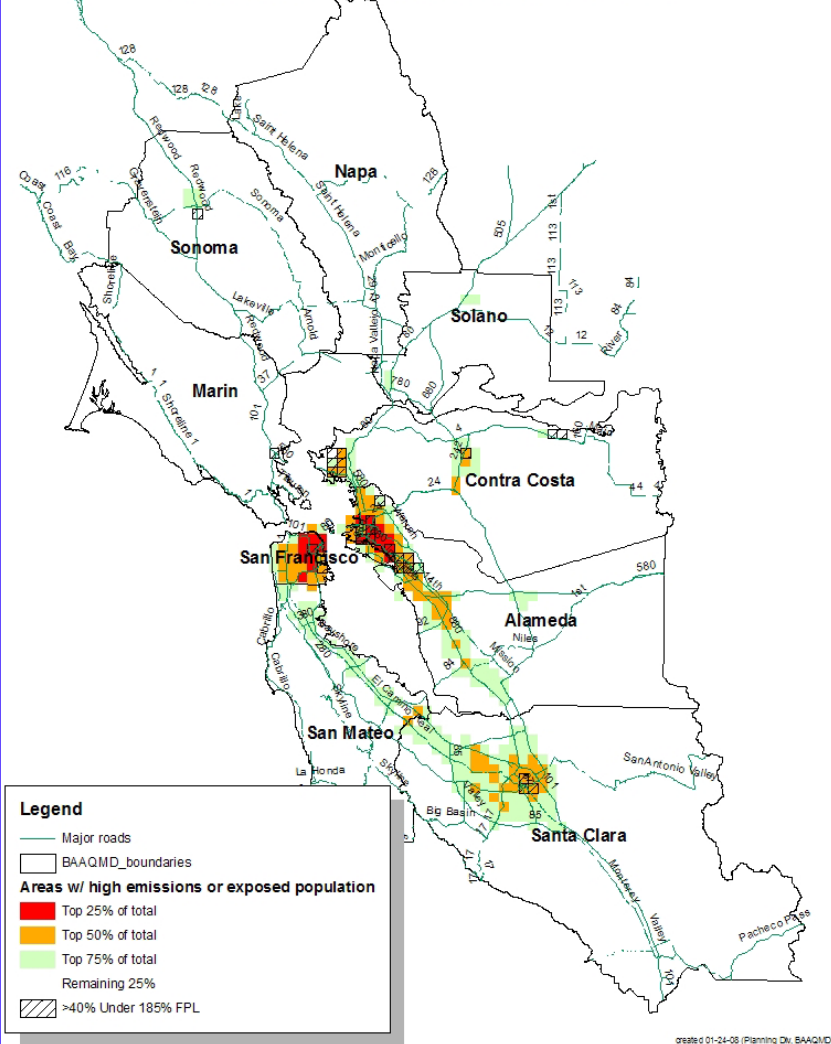
**March 4, 2008**

# Overview

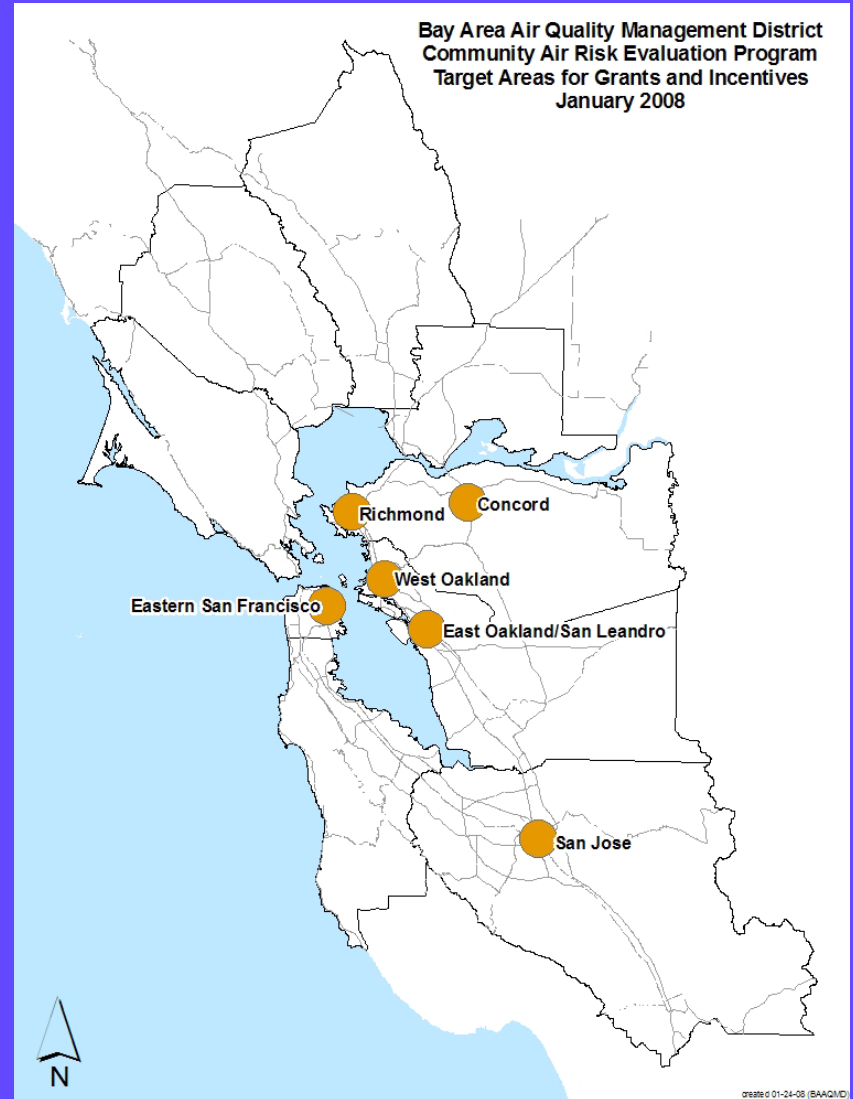
- Based on maps of updated CARE emissions and sensitive populations, six impacted communities were identified
  - Grant funds targeted
  - Outreach efforts increased
  - Liaison with local health departments
- Land use Guidance
  - Projects may increase emissions in high population areas
  - Projects may increase population in high emission areas
  - Provide Bay Area specific guidance

# Six Target Areas

Exposure to Diesel PM10 Emissions of Combined Under-18 and Over-64 Populations in Year 2005  
(based on a weighted product of population and emissions)



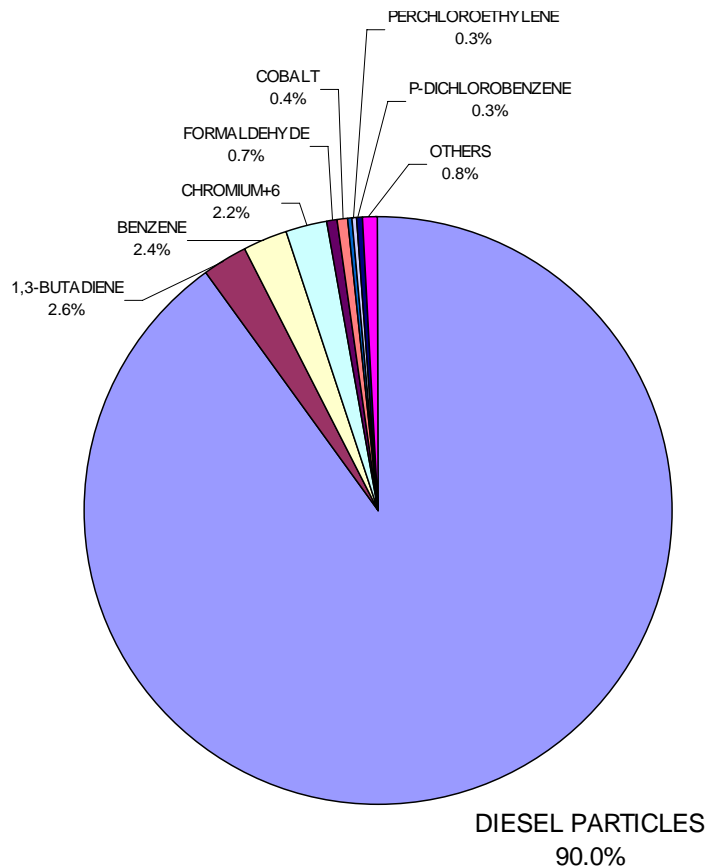
Bay Area Air Quality Management District  
Community Air Risk Evaluation Program  
Target Areas for Grants and Incentives  
January 2008



March 4, 2008

# Cancer Risk-Weighted Emissions: East San Francisco

## By Pollutant



## By Source Category

