



BAY AREA
AIR QUALITY
MANAGEMENT
DISTRICT

Bay Area Clean Air Communities Initiative

Cumulative Impacts Work Group March 5, 2009

Henry Hilken
Director of Planning & Research

A wide-angle photograph of the Golden Gate Bridge in San Francisco, California, spanning across the water. The bridge's red-orange towers and suspension cables are prominent against the blue sky and water. The city skyline is visible in the background.

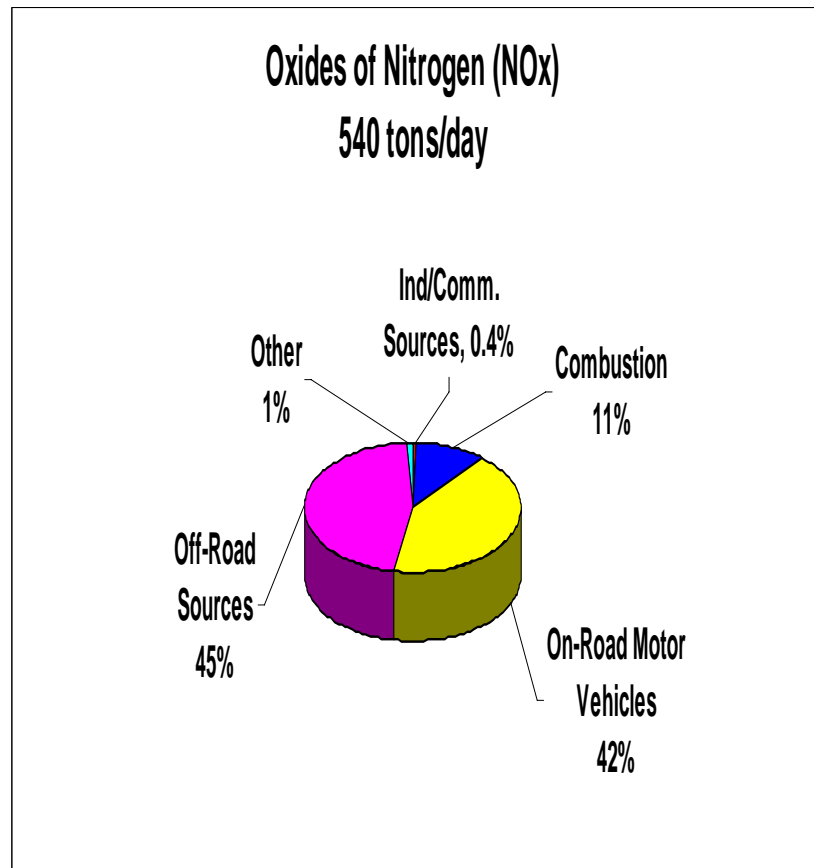
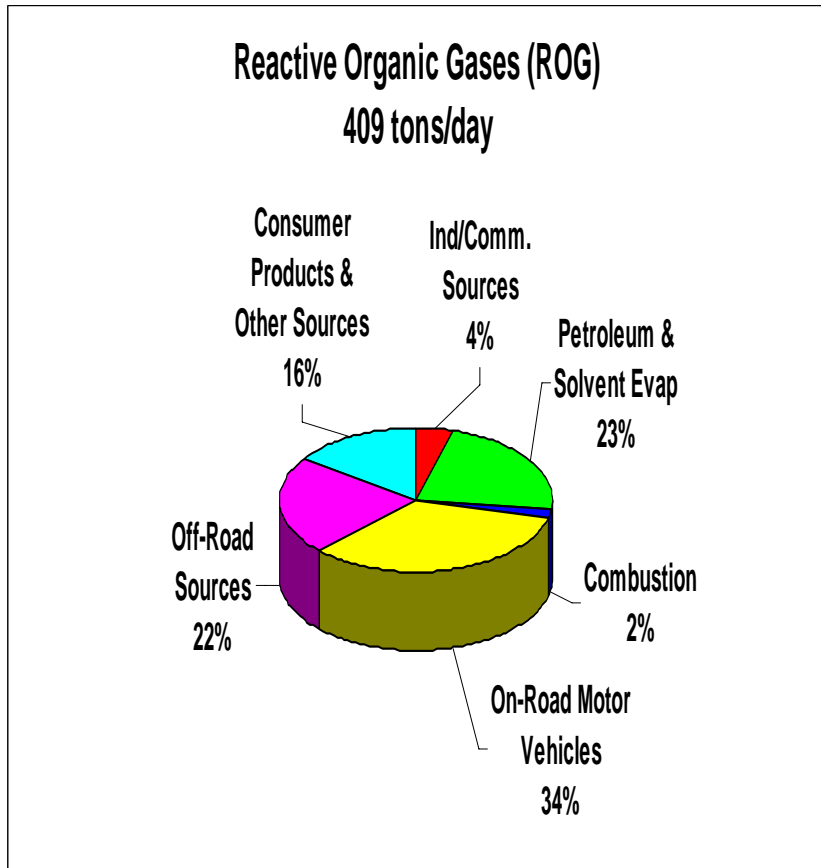
Bay Area Clean Air Communities Initiative

- Multifaceted approach to cumulative impacts
 - Identify Impacted Communities
 - Continue targeting grants and incentives to impacted areas
 - Continue community outreach and education
 - Focused enforcement of state and District regulations
 - Monitoring local air quality
 - Develop targeted regulations
 - Indirect Source Rule
 - Permitting requirements



Bay Area Clean Air Communities Initiative

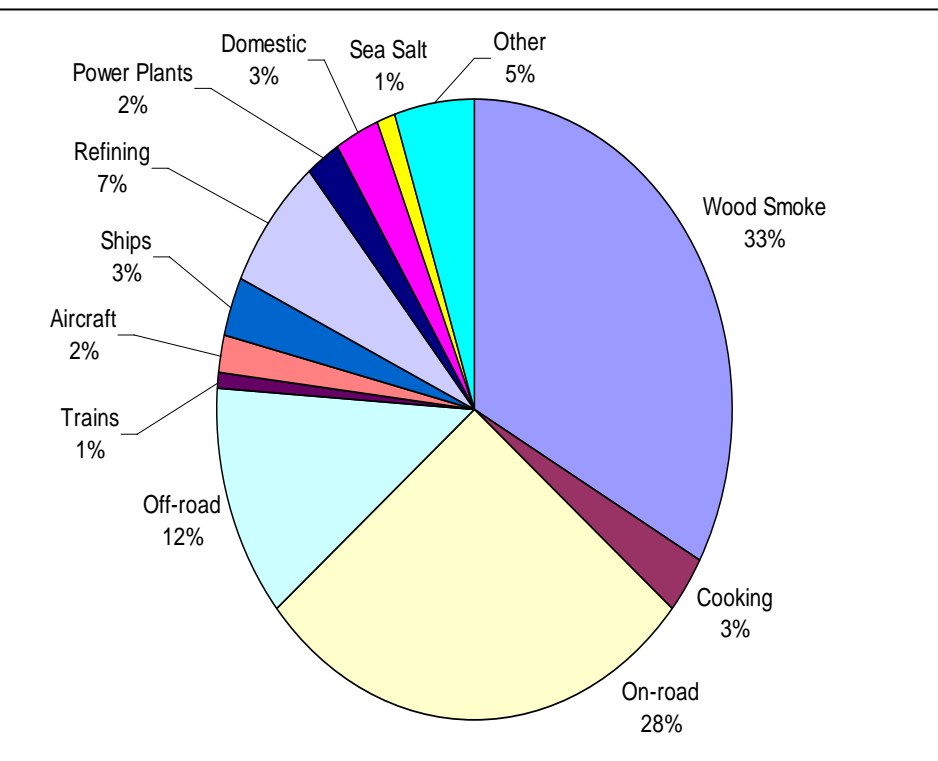
2006 Ozone Precursor Emissions





Bay Area Clean Air Communities Initiative

Sources of Winter PM2.5



Sources of Risk Weighted Emissions

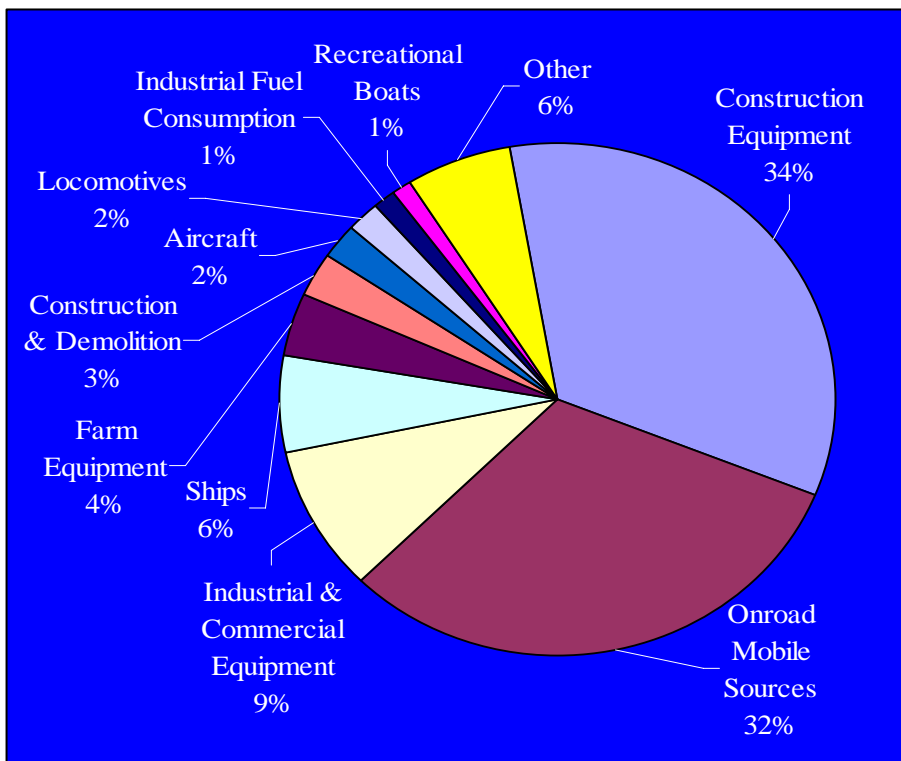
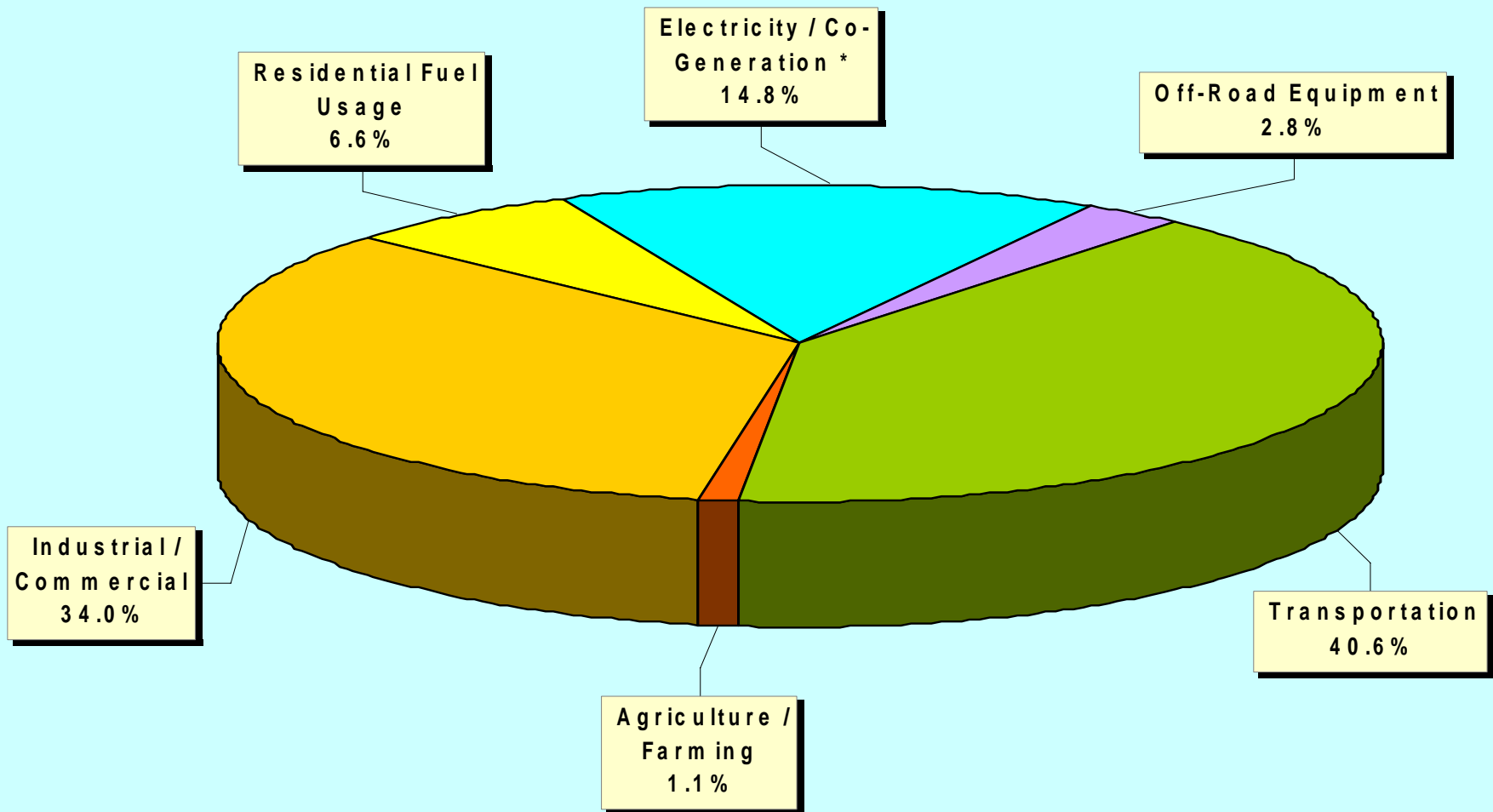


Figure 2: 2007 Bay Area GHG Emissions by Sector



Total emissions: 102.6 million metric tons/year



Bay Area Clean Air Communities Initiative Concept

A Comprehensive Regulatory Initiative to Mitigate
Air Quality Impacts of Land Use Decisions and Assist
in Addressing the Impacts of Growth on our Climate

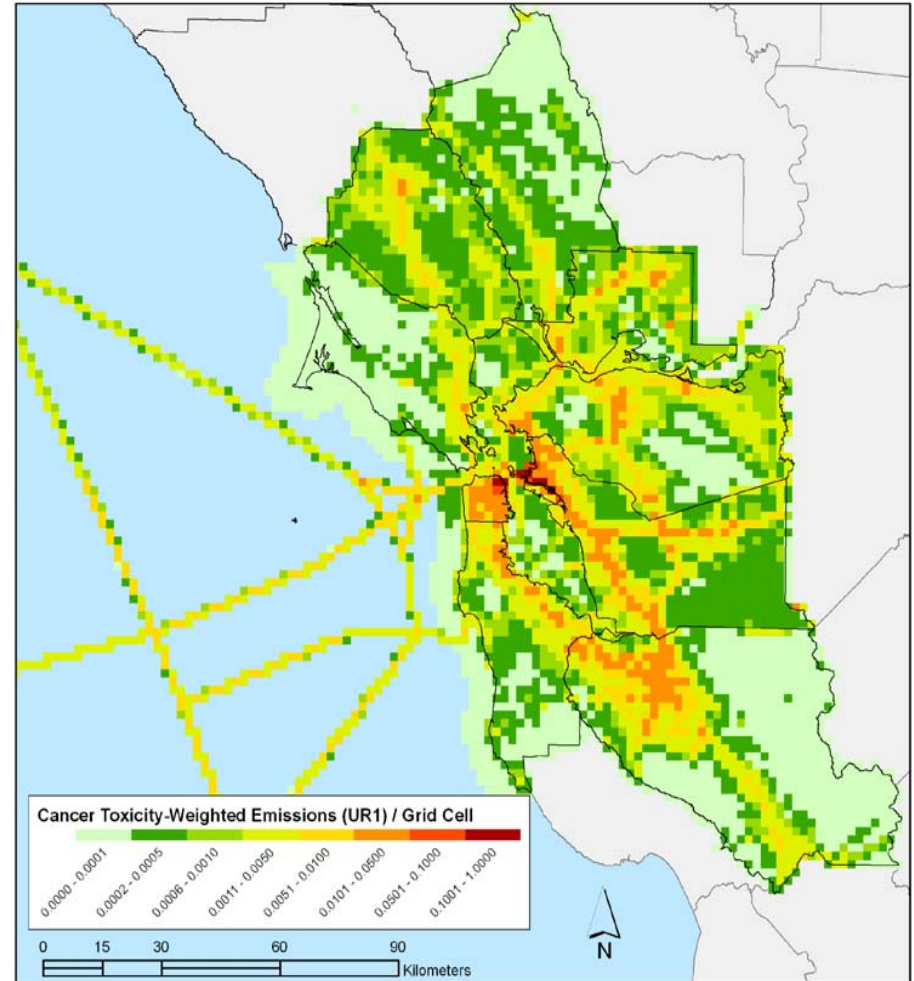
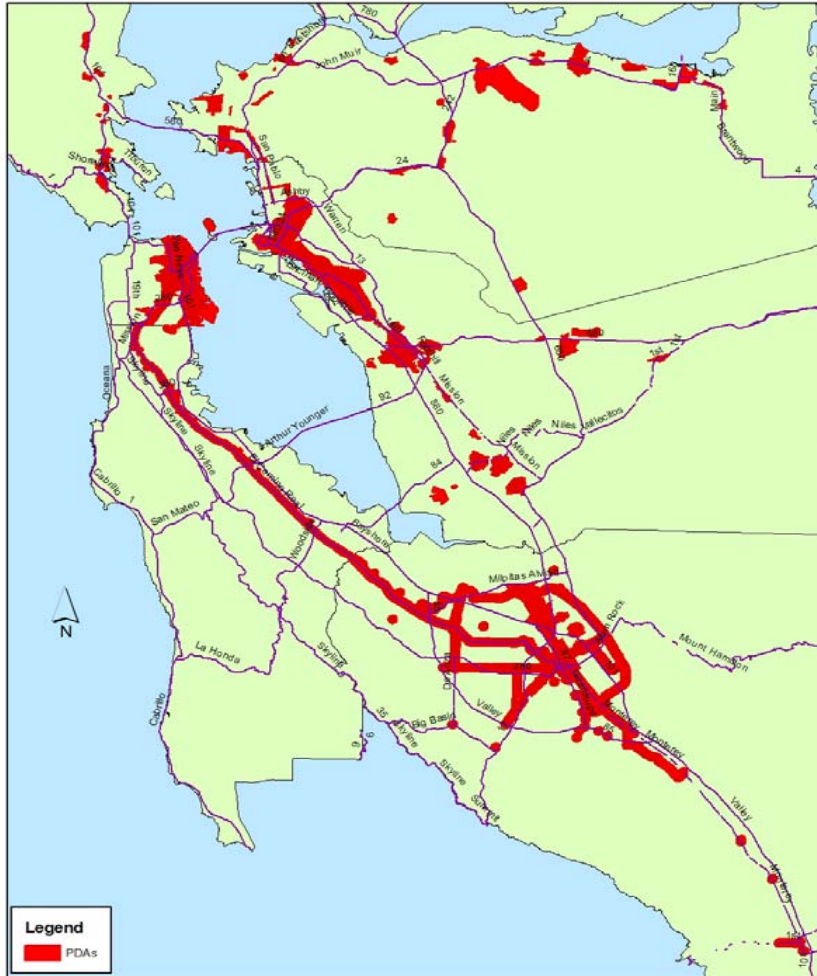


Bay Area Clean Air Communities Initiative - Why

- New development will resume, Vehicle Miles Traveled will continue to rise, transportation related impacts will continue
- Need to promote strategies that support livable communities, e.g. Priority Development Areas
- CARE Program has identified impacted communities
 - Impacts due to land use decisions in cities and counties
 - Address cumulative impacts through District undertaking additional review of activities in these areas
- How the Bay Area grows will affect the region's ability to curb greenhouse gases and meet SB 375



Priority Development Areas



A scenic photograph of a white lighthouse perched on a grassy cliff overlooking the ocean under a blue sky with scattered clouds. The title text is overlaid on the right side of this image.

Bay Area Clean Air Communities Initiative - What

- Address impacts of growth on regional and local air quality
- Reduce GHG emissions from land use and transportation, help meet SB 375 targets
- Support and implement CARE program priorities and goals
 - Avoid land use conflicts and reduce exposure in impacted communities
 - Address cumulative impacts in impacted communities



Clean Air Communities Initiative - Targeted Regulation

Proposed Indirect Source Rule

- Standards for new development to minimize emissions of criteria and toxic pollutants and GHGs.
- Establish official Impacted Communities in the Bay Area where additional review of new and modified stationary sources is performed.
- Focused review of new development proposed in Impacted Communities.



Clean Air Communities Initiative - Targeted Regulation (Continued)

- Require more stringent permitting requirements of stationary sources when in:
 - proximity to sensitive sources
 - impacted communities
- Establish an air quality/GHG fee for new development. Fee would be used to create offsets for new developments over designated threshold.
- Fee reductions or exemptions and additional incentives for in-fill development and PDAs.
- Delegation agreement provisions for local cities and counties.