



# Bay Area Air Quality Management CARE Taskforce Meeting

September 17, 2008

## Update on Incentive Funding Disbursed to Impacted Communities

Damian Breen  
State Grant Programs Manager

# Overview

- **CARE Objectives and Results**
- **Priority Communities**
- **Incentives Programs**
- **Results**
- **Next Steps**

# CARE Program Objectives

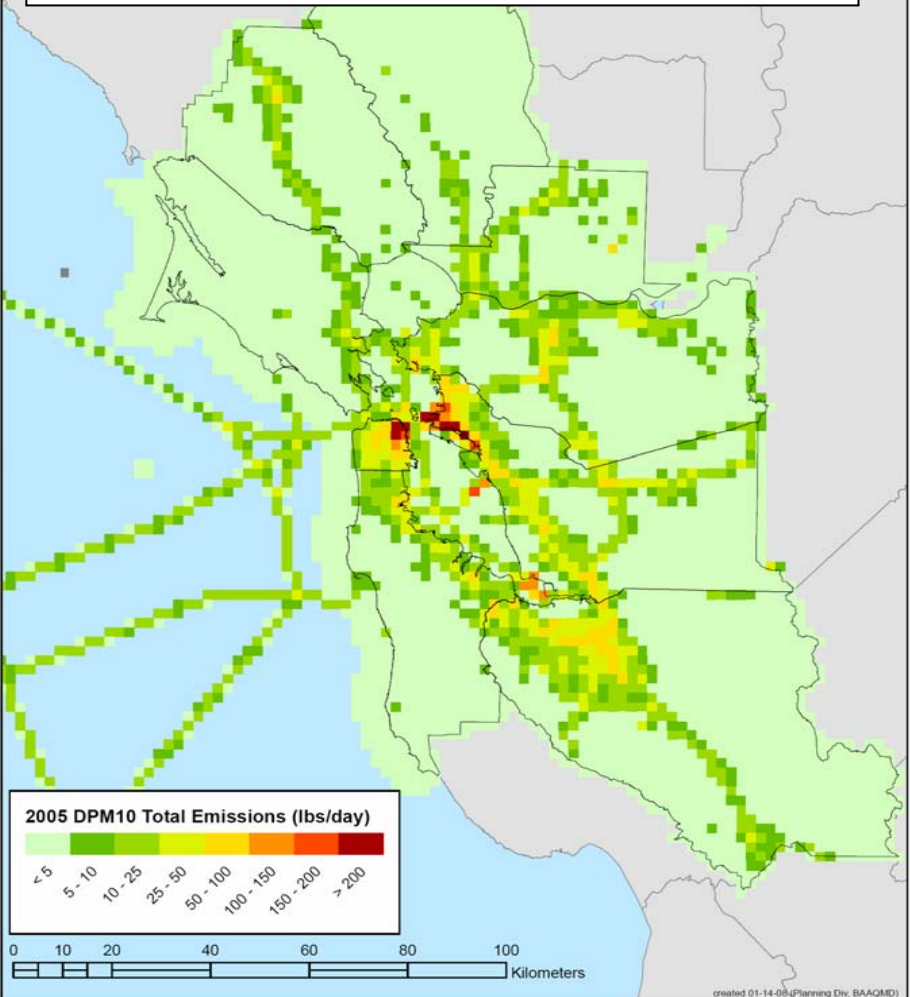
- **Estimate health risks associated with exposure to toxic air contaminants**
- **Developed preliminary emissions inventory**
- **Devise strategy to mitigate health effects**

# CARE Results

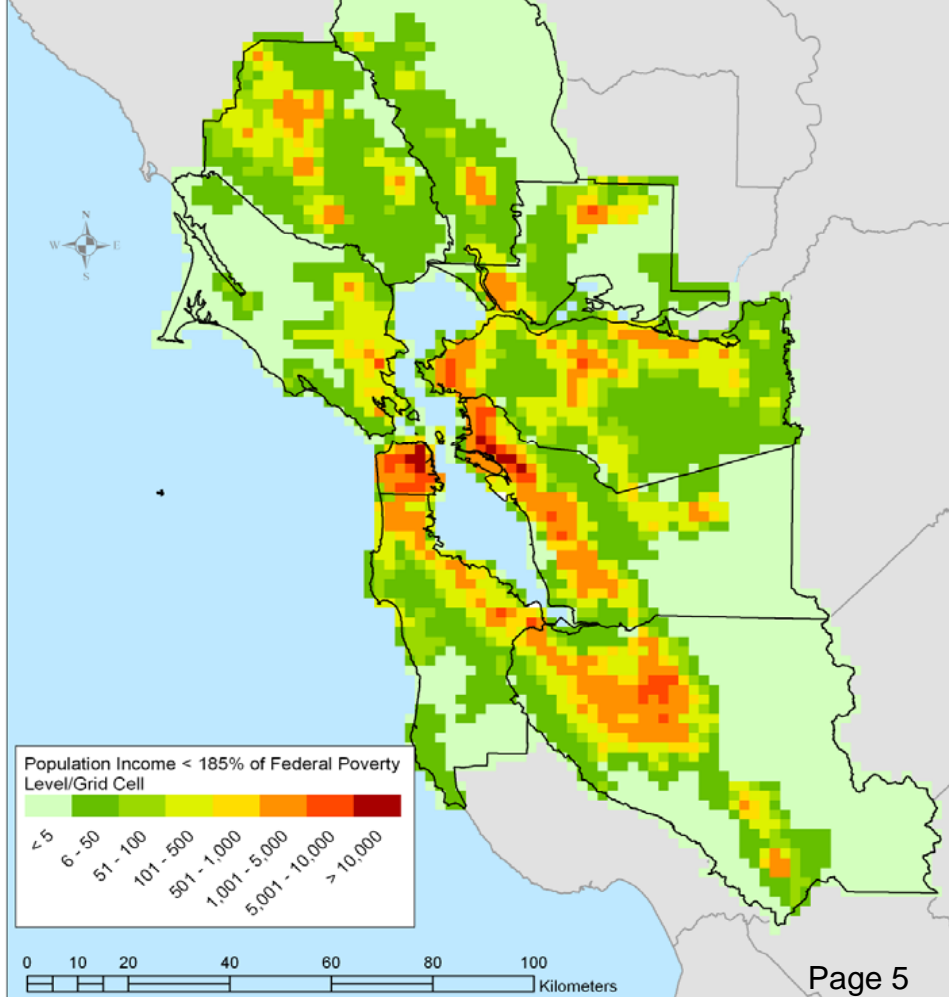
- **Diesel PM is a Critical Health Risk in Bay Area**
- **Certain Communities (Impacted) Experience Higher Risk Level**
- **West Oakland Health Risk Assessment:**
  - 3 Times Cancer Risk in West Oakland compared to Bay Area Average
  - On-Road Trucks = 80% of Cancer Risk from Diesel PM in West Oakland
- **Focus health risk mitigation measures on locations with higher risk levels and sensitive populations**
  - Age (youth and seniors)
  - Low income (reduced access to health care)
- **85% of Cancer Risk-Weighted Emissions from Diesel PM**

# Areas with High Emissions and High Numbers of Sensitive Receptors

**Diesel PM Emissions**

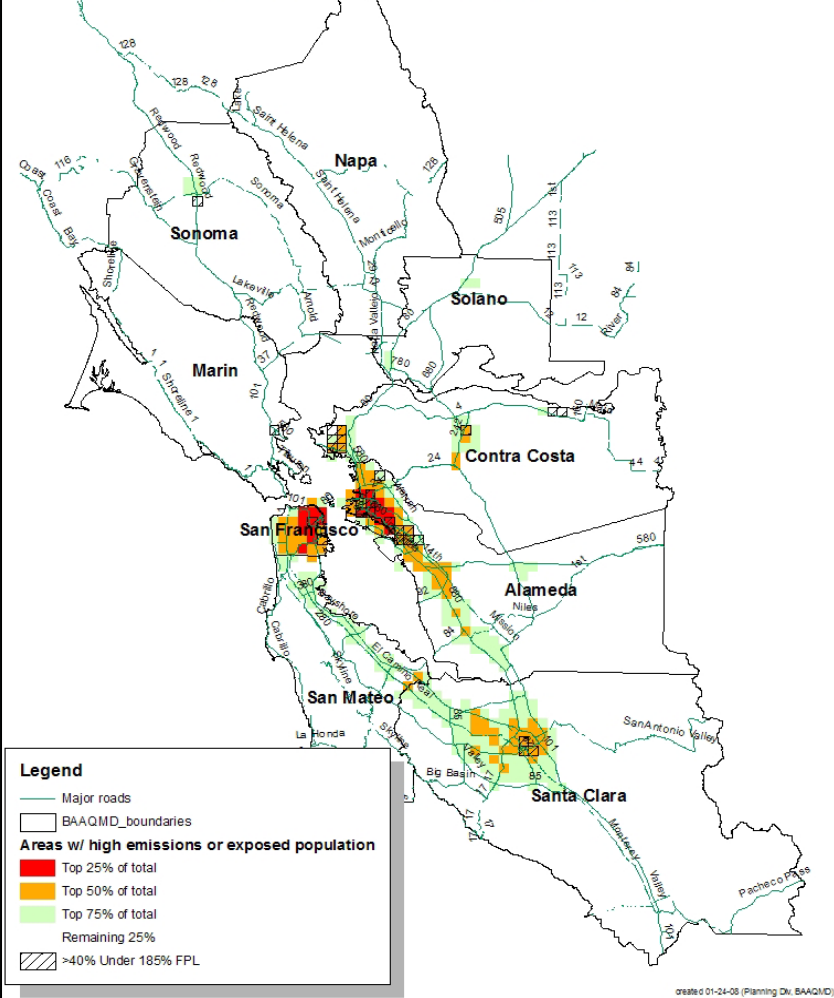


**Low Income Families**

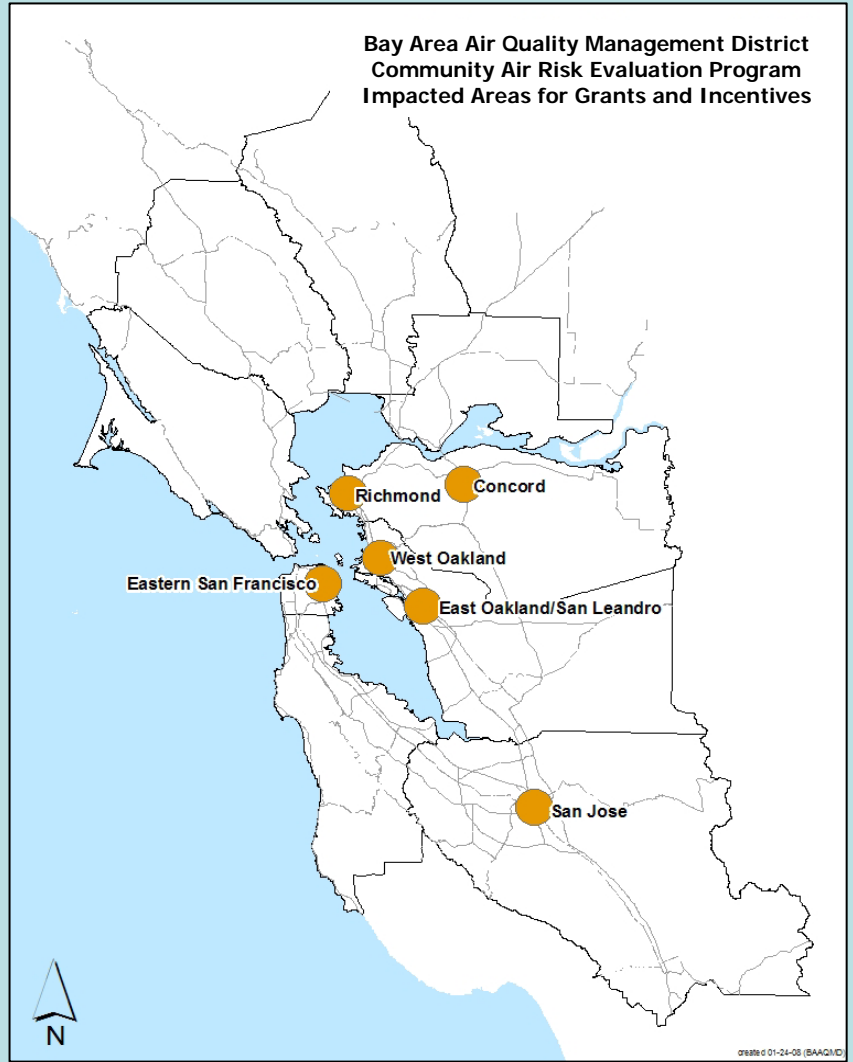


# Priority Communities

Exposure to Diesel PM10 Emissions of Combined Under-18 and Over-64 Populations in Year 2005  
(based on a weighted product of population and emissions)



Bay Area Air Quality Management District  
Community Air Risk Evaluation Program  
Impacted Areas for Grants and Incentives



# Incentives Funding

## Focus Incentives Funding on Highest Risk Sources and on Most Impacted Communities:

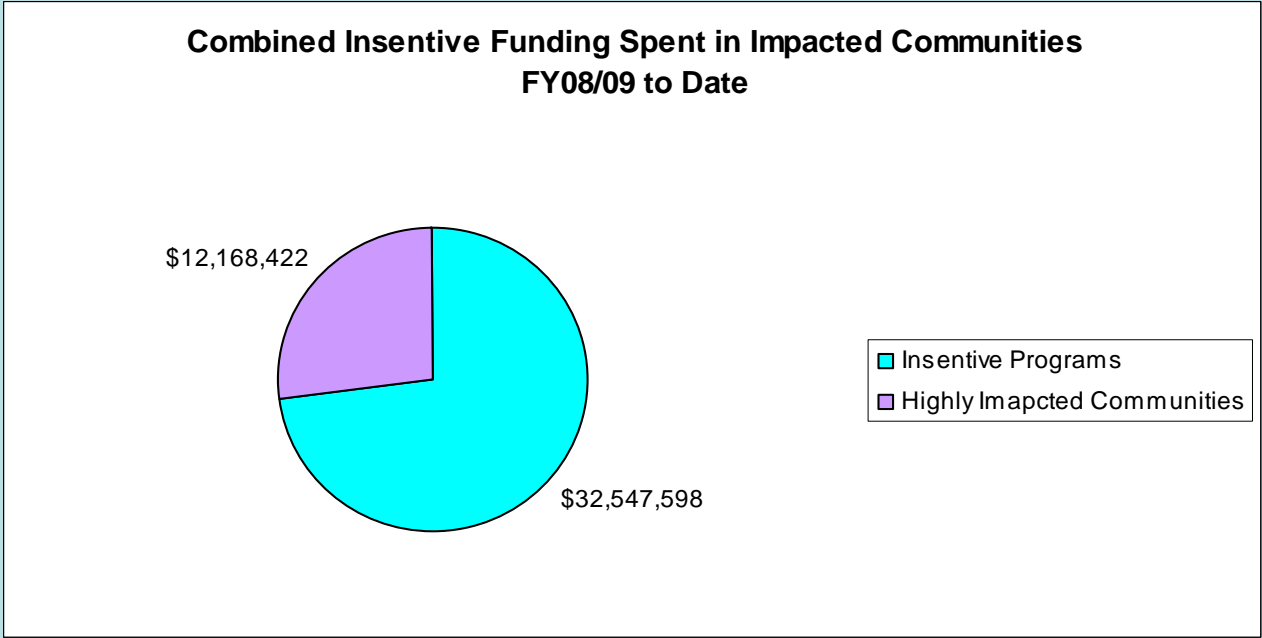
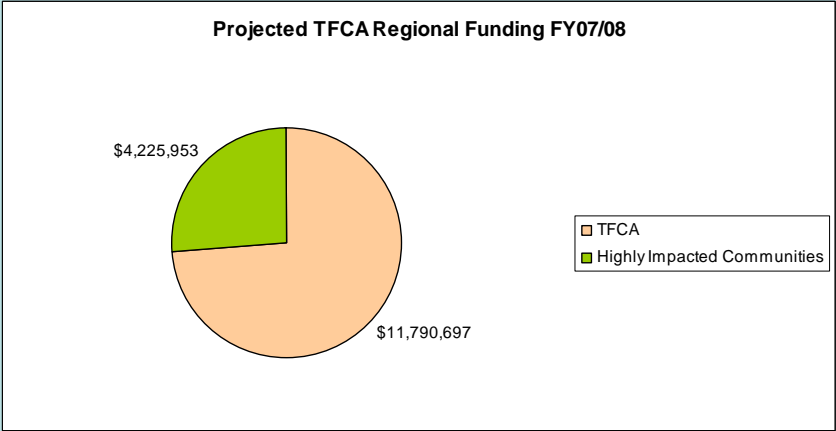
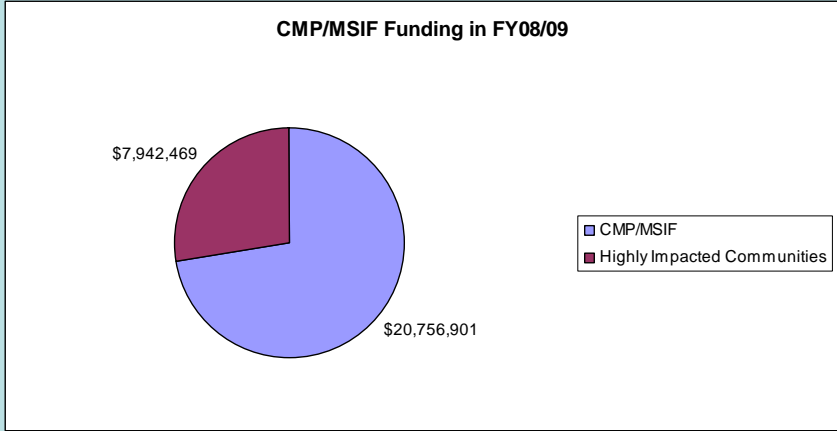
- **CMP:** **\$11 million**
- **TFCA Regional:** **\$12 million**
- **MSIF:** **\$10 million**
- **I-Bond:** **up to \$35 million**

# Results

<b>Highly Impacted Community</b>	<b>NOx Tons</b>	<b>ROG Tons</b>	<b>PM Tons</b>	<b>Incentives Funding</b>
<b>West Oakland</b>	<b>331</b>	<b>50</b>	<b>20</b>	<b>\$7,500,000</b>
<b>Richmond</b>	<b>49</b>	<b>8.3</b>	<b>2.7</b>	<b>\$1,600,000</b>
<b>East San Francisco</b>	<b>21</b>	<b>1.4</b>	<b>2.2</b>	<b>\$1,305,00</b>
<b>East Oakland/ San Leandro</b>	<b>30</b>	<b>2.5</b>	<b>2</b>	<b>\$825,000</b>
<b>San Jose</b>	<b>25.5</b>	<b>2</b>	<b>1</b>	<b>\$800,000</b>
<b>Concord</b>	<b>1.6</b>	<b>0.03</b>	<b>0.15</b>	<b>\$68,000</b>
<b>Total</b>	<b>458.1</b>	<b>64.23</b>	<b>28</b>	<b>\$12,098,000</b>



# Results



# Next Steps

- **Integrate CARE into I-Bond Process**
- **Analyze I-Bond Applications**
- **Looking at Better Outreach Strategies**
- **Report to District's Board in early 2009**