



BAY AREA  
AIR QUALITY  
MANAGEMENT  
DISTRICT

# **CARE Task Force Meeting**

## **Healthy Community Development Guidelines**

October 18, 2011

Dave Vintze  
Air Quality Planning Manager

# Healthy Community Development Guidelines

---

- HCDGs versus CRRPs
  - Resource document to local governments, developers & stakeholders, supports CRRPs
  - Comprehensive planning approach for TACs and particulate matter
  - Standardize risk reduction measures
  - Provide plan or project level implementation guidance
  - Identify measures to address existing & new development

# Healthy Community Development Guidelines

---

## Contents

- What is a healthy community
- Health effects
- Air quality agency role
- Land use planning role
- Analytical methodology
- Integration into long range planning
- Risk reduction measures/fact sheets
- Plan or project level Implementation
- CEQA analysis guidance

# Healthy Community Development Guidelines

---

## Risk Reduction Measures

- Construction
  - Idling limits, generators, particulate filters, electrification
- Truck Operations
  - Routes, delivery hours, idling, electrification
- Truck Fleets
  - Loading dock electrification, incentives for low emission trucks, TRUs
- Exposure Reduction
  - Filtration, HVAC intake location, vegetation, site and building design
- Harbor Craft
  - Shore power, incentives for engine replacement
- Stationary Sources

# Healthy Community Development Guidelines

---

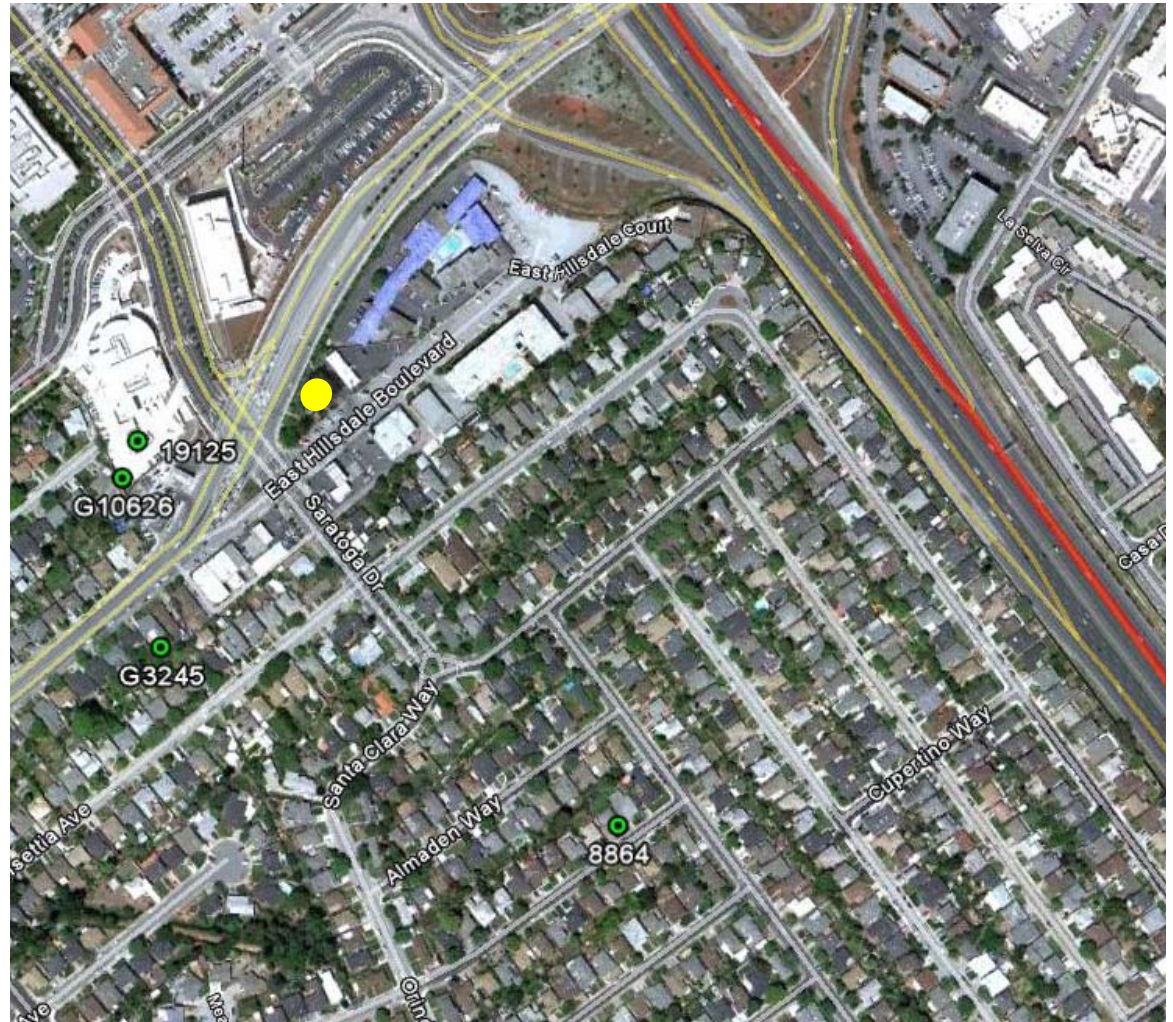
## Fact Sheet Content

- Description
- Effectiveness
- Quantification
- Implementation
  - Plan level
  - Project level
- On-line resources
- Sources

# Assessing Risks & Hazards Impacts to New Sensitive Receptors

Source	Cancer Risk	PM2.5
East Hillsdale Boulevard	14 at 50 ft.	.02 at 50 ft.
Highway 101	12 at 850 ft.	.3 at 850 ft.
Plant # 8864 (wastewater treatment)	4	N/A
Plant # G3245 (Dry Cleaner)	9	N/A
Plant # G10626 (Permitted BUG)	6	0.05
Plant # 19125 (Old BUG)	15	0.02

Receptor



---

# Next Steps

---

- Complete HCDGs
- Hold public workshops
- Comment on land use planning and CEQA docs
- Continue to refine technical data and screening process



Poor housing site



Good housing site