

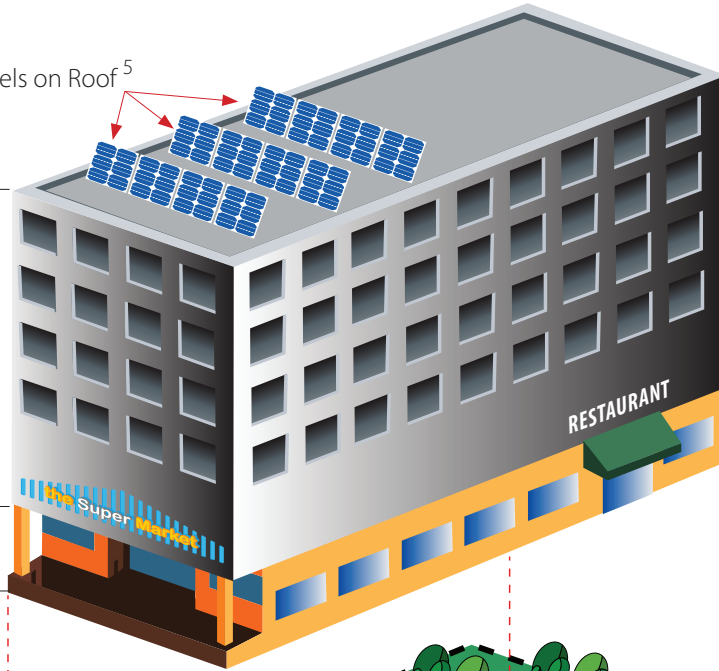
# Example of Mixed Use Project in CalEEMod

**5-Story Building**

**2nd-5th Floor:**  
Mid-Rise Apartments

**1<sup>st</sup> Floor:**  
Supermarket & Restaurant

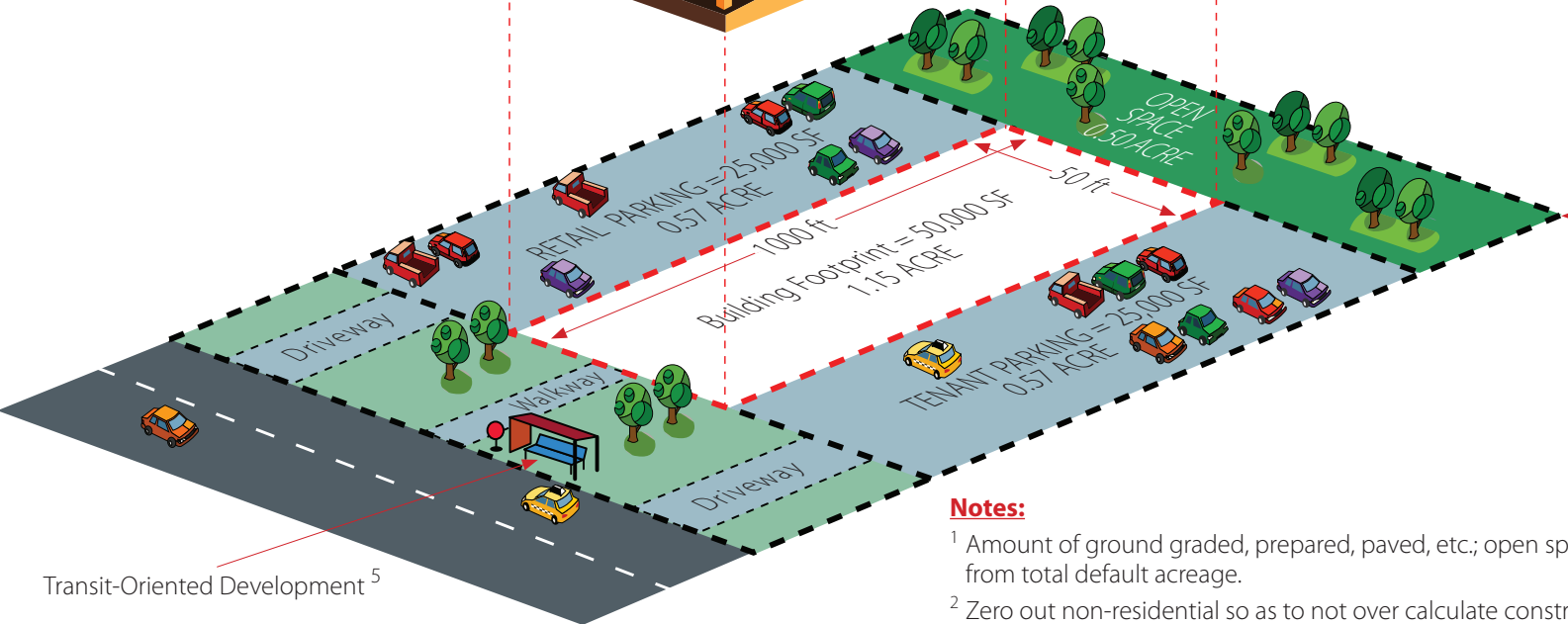
Solar Panels on Roof<sup>5</sup>



Land Use	Sub Type	Unit Amt/ Size Metric	Lot Acreage	Square Footage <sup>3</sup>
Residential	Mid-Rise Apartments	100 DU	1.60 <sup>1</sup>	100,000
Retail	Supermarket	45K SF	0 <sup>2</sup>	45,000
Recreational	Restaurant	5K SF	0	5,000
Parking <sup>4</sup>	Parking Lot	50K SF	1.15	50,000

**TOTAL LOT ACREAGE = 3.25 ACRE**

Transit-Oriented Development<sup>5</sup>



**Notes:**

- <sup>1</sup> Amount of ground graded, prepared, paved, etc.; open space (0.5 acre) not graded so subtracted from total default acreage.
- <sup>2</sup> Zero out non-residential so as to not over calculate construction emissions & to take advantage of mitigation measures (i.e. increased density)
- <sup>3</sup> Used to calculate architectural coating emissions and energy usage.
- <sup>4</sup> Add parking as a separate land use and enter its associated acreage and square footage.
- <sup>5</sup> Enter mitigation measures under the mitigation tab.