



natural & working lands

Reduce Natural & Working Lands Emissions

The Air District will increase carbon sequestration through tree planting, soil management, and open space protection.

How do we propose to do it?

Increase Carbon Sequestration

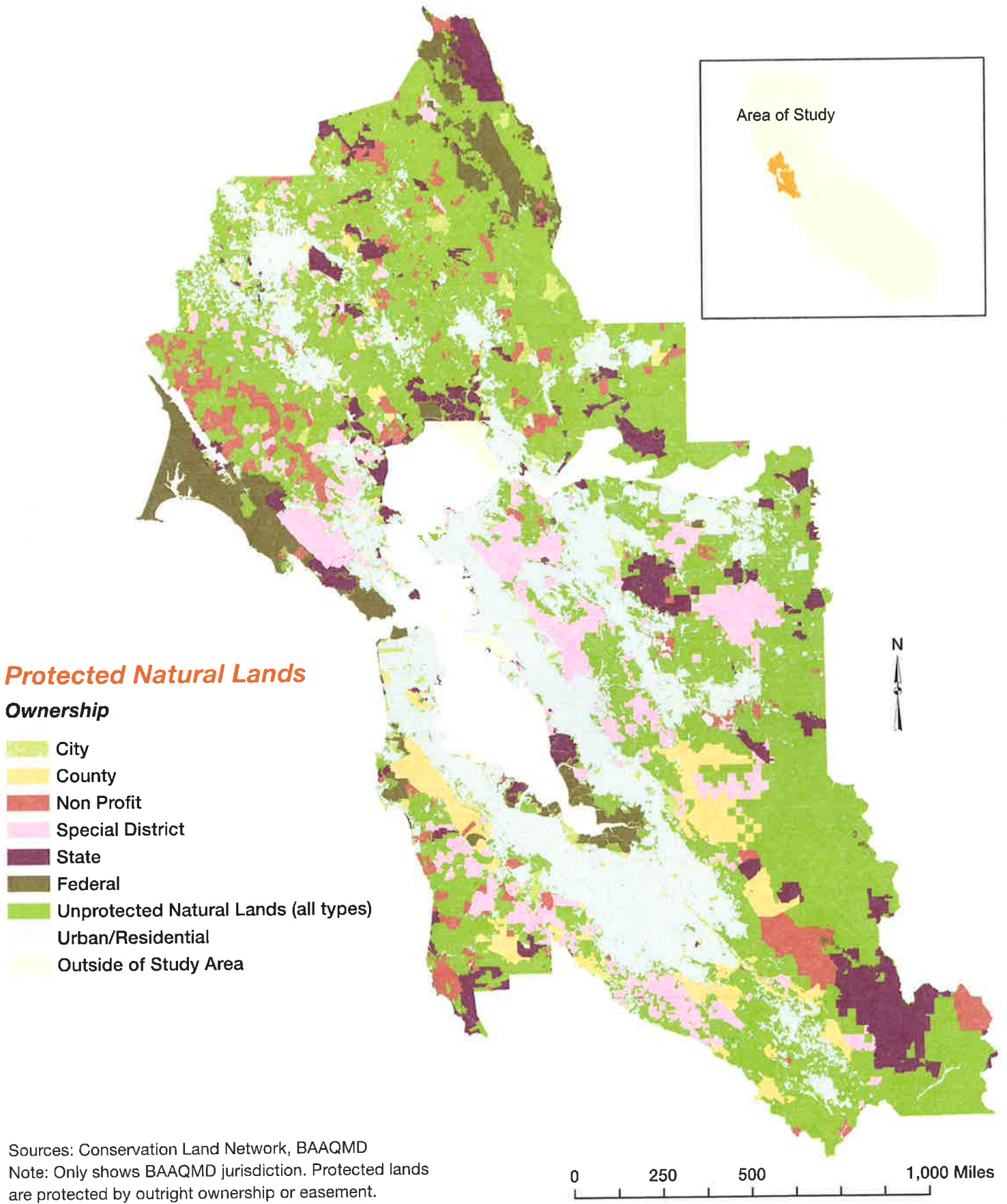
- Assist local farmers:**
- Develop guidance on soil management to maximize GHG sequestration on rangelands
 - Support development of carbon offsets for sale via the CAPCOA GHG Reduction Exchange
 - Work with resource conservation districts, local farms and others to apply compost on rangelands
- Assist local governments by developing guidance on estimating GHG sequestration associated with wetlands restoration and protection**
- Partner with BCDC and others to protect and restore existing wetlands that provide carbon sequestration value in the Bay Area**

Plant Trees

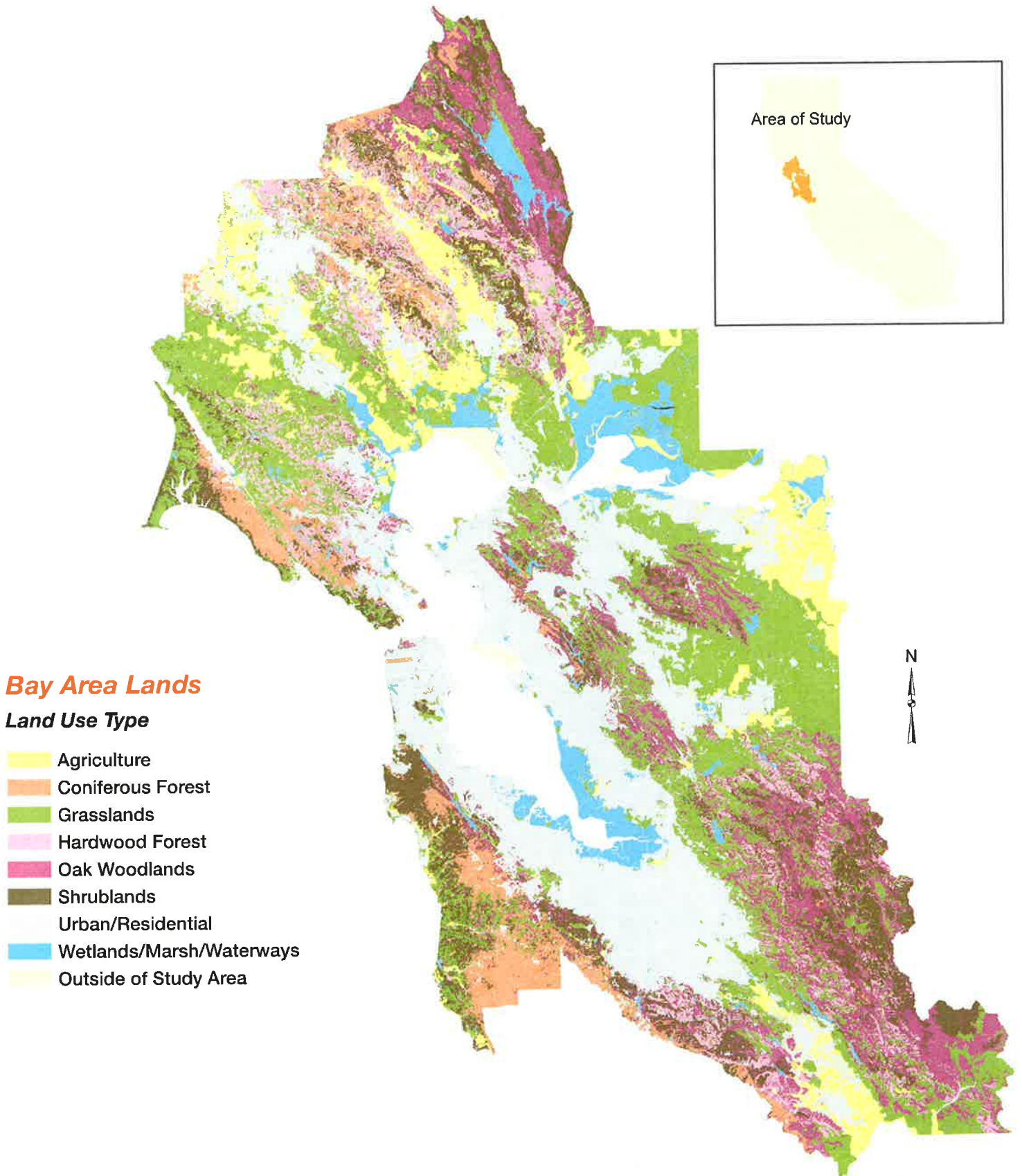
- Assist local governments:**
- Encourage model tree planting ordinances
 - Support efforts to secure funding for increasing tree canopy
 - Provide data on maximizing air quality, GHG and public health benefits from tree planting
- Update the Air District's guidelines on local plans and environmental review to include tree planting recommendations for new developments**



Who Owns Protected Natural Lands in the Bay Area?



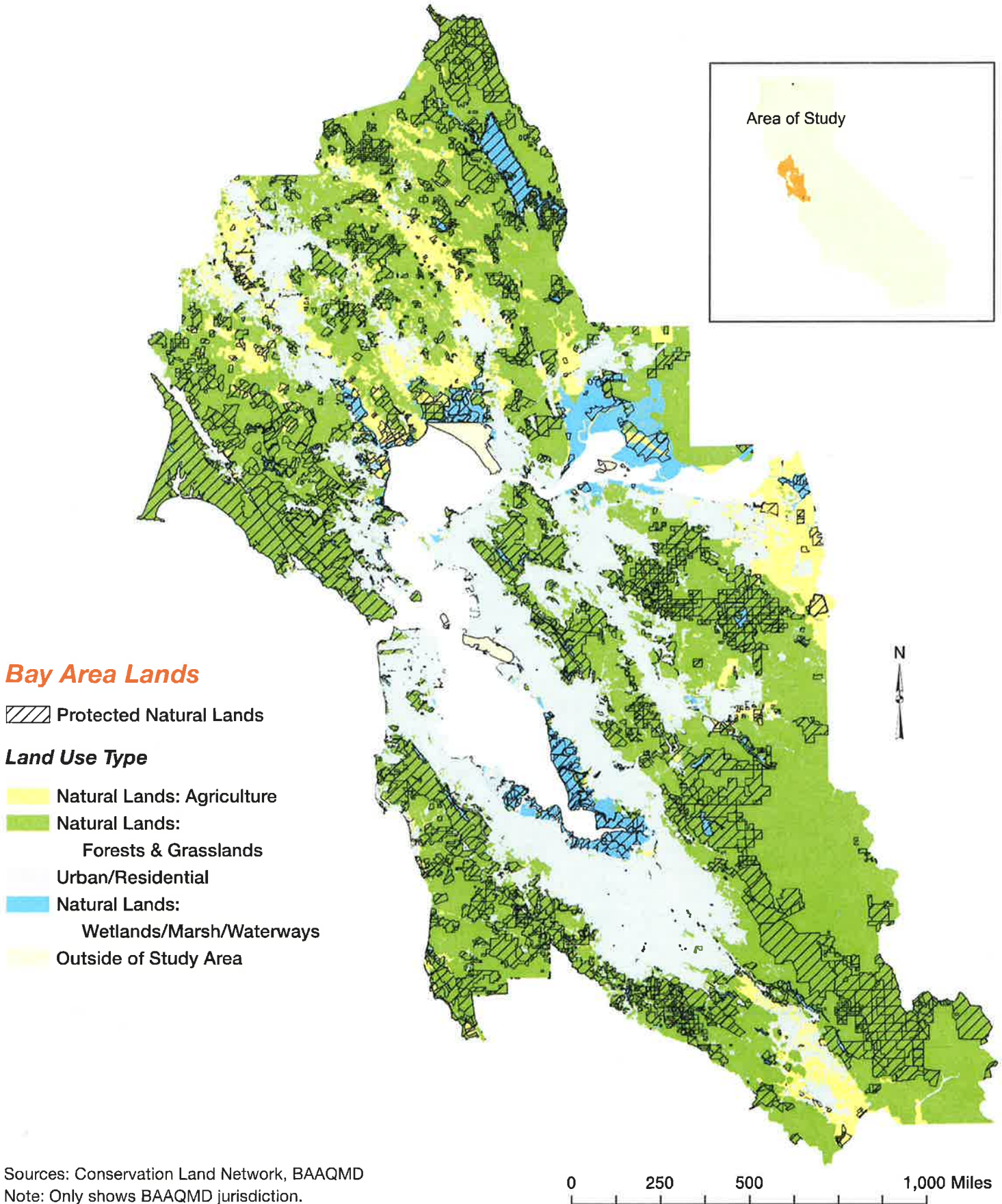
What Type of Natural Lands Exist in the Bay Area?



Sources: Conservation Land Network, BAAQMD
Note: Only shows BAAQMD jurisdiction.

0 250 500 1,000 Miles

Which Natural Lands are Protected in the Bay Area?



Sources: Conservation Land Network, BAAQMD
Note: Only shows BAAQMD jurisdiction.

For more information on the 2016 Clean Air Plan/Regional Climate Protection Strategy, please visit: www.baaqmd.gov.