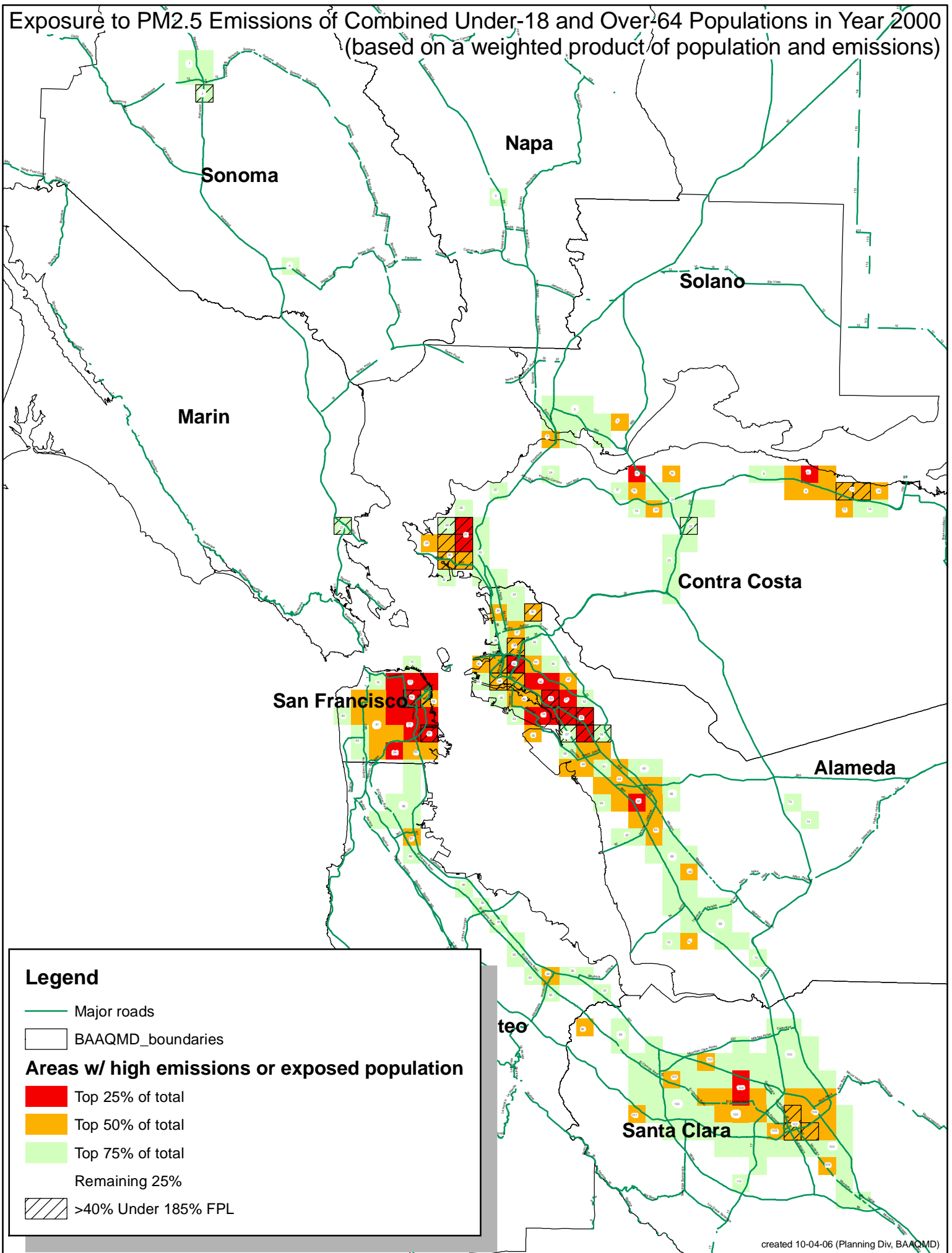


Exposure to PM2.5 Emissions of Combined Under-18 and Over-64 Populations in Year 2000
 (based on a weighted product of population and emissions)



Legend

- Major roads
- BAAQMD_boundaries

Areas w/ high emissions or exposed population

- Top 25% of total
- Top 50% of total
- Top 75% of total
- Remaining 25%
- >40% Under 185% FPL