

**Bayview Hunters Point/
Southeast San Francisco
Community Emission Reduction Plan (CERP)
Community Steering Committee #5**

**May 21, 2024
Southeast Community Center,
1500 Evans, San Francisco, CA**



Welcome and Introductions

Agenda

- Welcome and Introductions
- Community Mapping Continued
- Question and Answer Review
- Introduction to Plan Vision and Principles
- Wrap up, Next Steps & Announcements

YOU ARE HERE! CERP Timeline Overview

Initialization Phase
"Scope and Organize"
 (Jan-Mar 2024)

Plan Preparation Phase
"Assess"
 (Apr-June 2024)

Core Planning Phase
"Plan"
 (Jul-Dec 2024)

Plan Adoption
"Implement"
 (Jan-May 2025 and beyond)



Theme:
PARTNER WITH COMMUNITY

Key Goals:

- Set-up CSC Structure
- Establish Co-Leadership Team
- Review/Define Plan Boundaries
- Review and Build Community Profile

Key Deliverables:

- ___ CSC Charter (approved!)
- ___ CSC Plan Boundaries (in progress)
- ___ Draft Community Profile (in progress)

Theme:
UNDERSTAND THE CHALLENGES

Key Goals:

- Review AQ Technical & Enforcement Data
- Develop Initial Visions & Principles
- Define Key Issues and Problems and plan-level goals

Theme:
DEFINE THE SOLUTIONS

Key Goals:

- Research other CERPs for Successful Approaches
- Gain consensus on plan outline
- Develop specific objectives, goals, and action strategies

Theme:
COMMIT TO ACTION & MUTUAL ACCOUNTABILITY

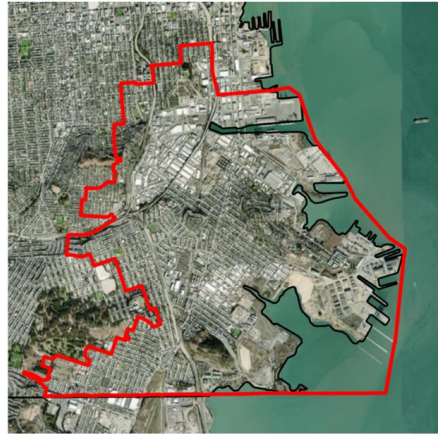
Key Goals

- Develop Draft Plan for Review
- Seek Plan Adoption
 - CSC
 - BAAQMD
 - CARB
- Prepare Annual Implementation Plan
- Annual Progress Reports

Community Mapping Continued

Follow-up on Community Boundaries

Question: What is the Purpose of the Community Boundary?



Purpose of the Community Boundary

- Community perspectives for the CERP are derived from this area
- CSC representatives must live and/or work in this designated area
- Designates the area of focus for targeted CERP strategies and actions (e.g., targeted enforcement, recommendations for implementation funding) in addition to the broader applied Air District programs or incentives that apply region wide
- Helps identify sources to be included in the community-level emissions inventory required by CARB under the AB 617 Blueprint (sources outside the community boundary may be included)

Review the maps from CSC Meeting #4

- All info from the maps were transcribed into a spreadsheet
- Each location was given an “id”
- Allows us to keep track of what information came from what map

map_id	description	type	notes	permit
C	C-01 EcoCenter at Heron's Head Park	vulnerable_population		
C	C-02 Amador St.	source_of_concern	fugitive dust	
C	C-03 Senior Center	vulnerable_population		
C	C-04 Alice Griffith Apartments	vulnerable_population	seniors, children, disabled	
C	C-05 Vechile Triage Center	vulnerable_population		
C	C-06 Senior Center	vulnerable_population		
C	C-07 Sewage Plant	source_of_concern	on Thomas Ave	Y
C	C-08 Sewage Plant	source_of_concern	on Evans Ave	Y
C	C-09 101 & 280 Interchange	source_of_concern		
C	C-10 Old PG&E Plant	source_of_concern		
C	C-11 Community Garden	vulnerable_population	on Carroll Ave	
C	C-12 UCSF/HP Hospital	vulnerable_population		
C	C-13 Health Center	vulnerable_population	on Keith St	
C	C-14 Unhoused Population	vulnerable_population	on Evans Ave & Third St	
C	C-15 Transit Cooridor & Freeway	source_of_concern		
C	C-16 Recology Recycling Center	source_of_concern		Y
C	C-17 Recology Landfill	source_of_concern	by Candlestick	Y
C	C-18 Candlestick	vulnerable_population	students, community spend time there	
C	C-19 Navy Shipyard	source_of_concern	cesium contamination	
C	C-20 Sewage Exhaust Pipes	source_of_concern		
C	C-21 Evans Childrens Center	vulnerable_population		
C	C-22 Community Center	vulnerable_population	elders	
C	C-23 Unhoused Population	vulnerable_population	under 280	
C	C-24	source_of_concern	unidentified	

Review the maps from CSC Meeting #4

- Many of the same locations identified across all maps
- Majority of sources are unpermitted

Green Sticker	<i>Locations where the most vulnerable live, work, or spend time outdoors</i>	<i>65 Total (12 unidentified)</i>
Red Sticker	<i>Sources of emissions or areas of concern</i>	<i>142 Total (26 unidentified)</i>

Review the maps from CSC Meeting #4

Sources of Concern

- *Mobile Sources (major roadways, truck traffic)*
- *Amador St. (Darling, concrete batch plants)*
- *Navy Shipyard*
- *Old PG&E Plant*
- *Distribution Centers (Amazon, product market)*
- *Train Transfer Location*
- *Recology (multiple locations)*
- *Wastewater Treatment (multiple locations)*
- *Vehicle Triage Center*
- *10 additional unique sources (junkyards, autobody, etc.)*
- *26 unidentified*

Review the maps from CSC Meeting #4

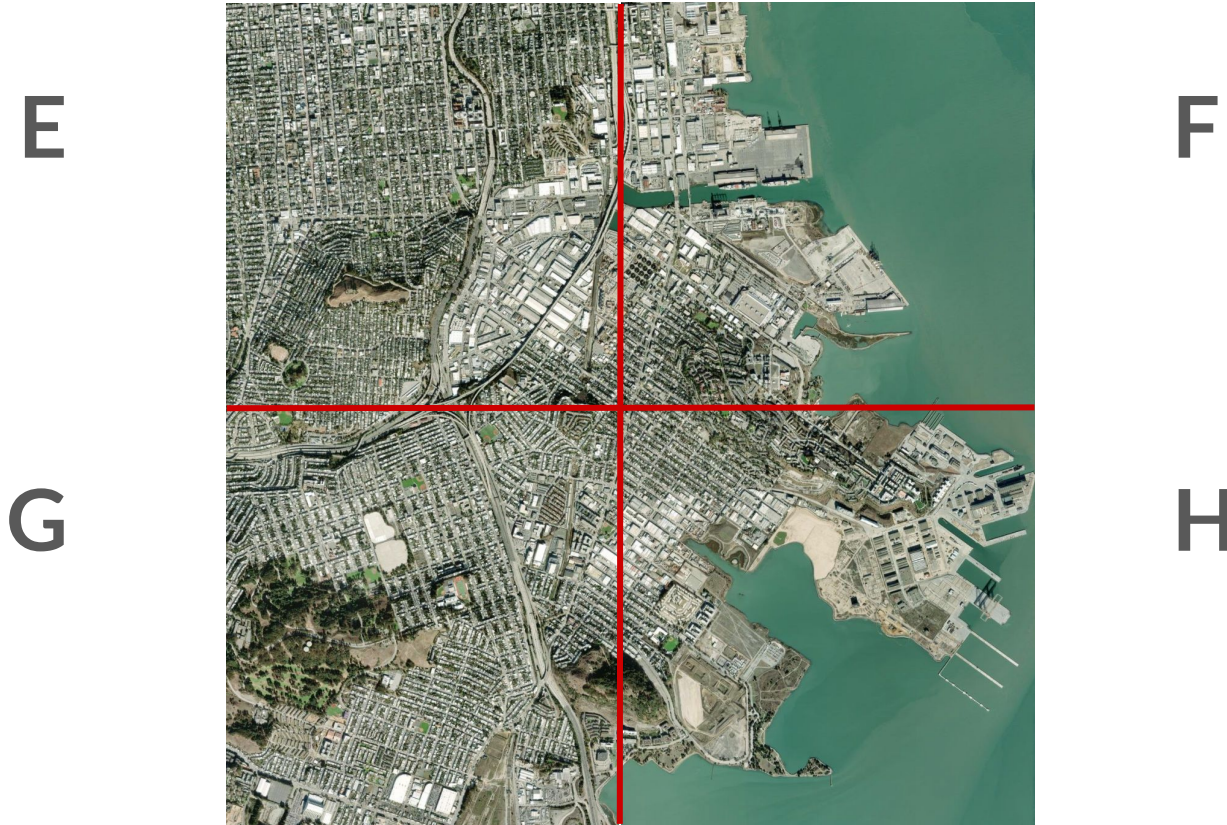
Vulnerable Populations

- *Public Housing (Alice Griffith Apartments)*
- *Senior Centers (George Davis)*
- *Health Centers*
- *Youth Centers (Boys & Girls Club)*
- *Schools (Elementary and High School)*
- *Parks*
- *Community Centers (MLK Pool)*
- *Daycares*
- *Unhoused*
- *12 unidentified*

Review the maps from CSC Meeting #4

Anything to add to the
summary from the previous
meeting?

Zooming in, Mapping the Quadrants



Zooming in, Mapping the Quadrants

- Continue to identify sensitive sites and areas of concern with a more detailed map

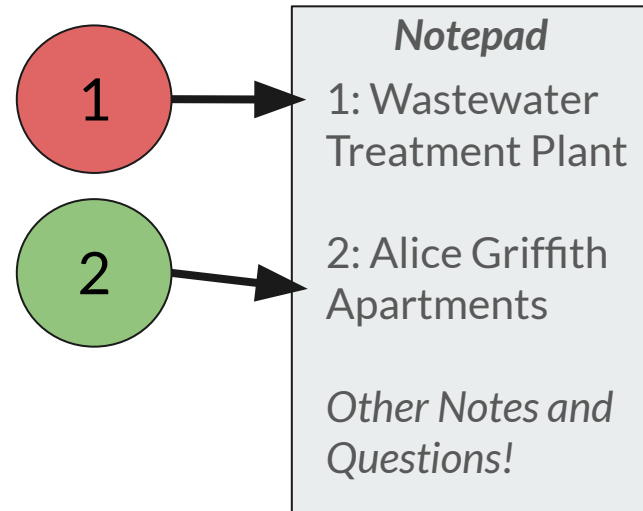
Green Sticker	<i>Locations where the most vulnerable live, work, or spend time outdoors</i>
Red Sticker	<i>Sources of air pollution or areas of concern</i>

Zooming in, Mapping the Quadrants

1. Marsha will count off folks into four (4) groups
2. Each group will have 20 mins for each quadrant
 - a. Please return to your seat if you are done before the 20 mins are finished
3. Rotate through all maps
4. Feedback and Reflection

Zooming in, Mapping the Quadrants

1. Add a number to each sticker
2. Make a note for each sticker on the notepad
3. Write down any questions
4. Review the boundary
5. Review maps from last meeting and add notes for unidentified locations

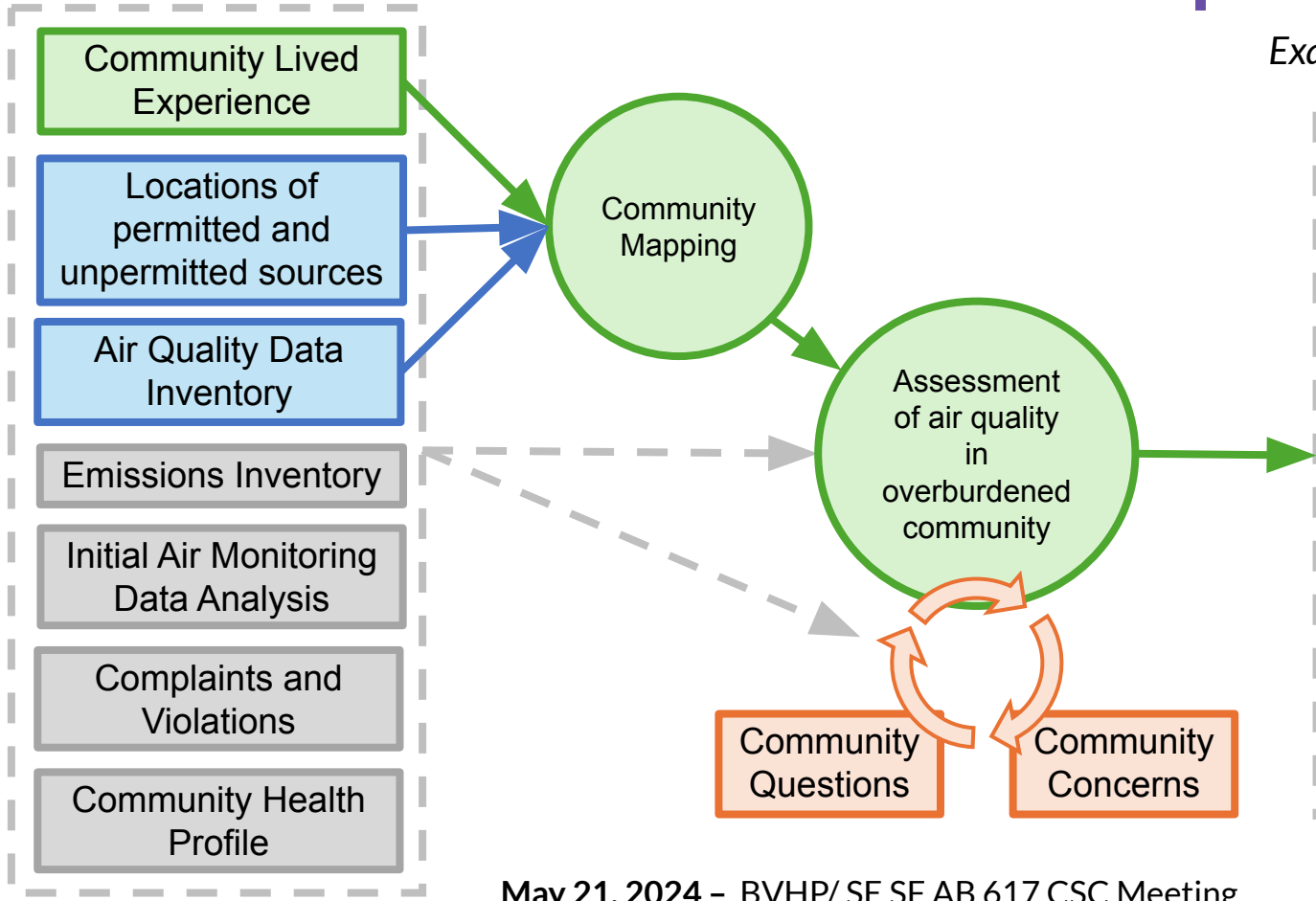


Questions and Reactions

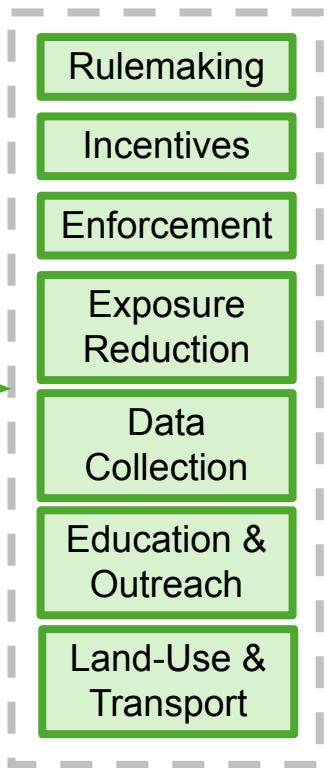
Is there anything that you think we have missed?

Next Steps: Big Picture

Baseline Technical Information



Example CERP Strategies



Question and Answer Review

Question and Answer Review

1. Review questions and answers in your groups
2. Write down one additional question on cards
3. Staff will collect your cards

Introduction to Plan Vision and Principles

CERP Planning: Starting from Vision and Principles

Vision

- Provides an opportunity for open brainstorming
- Expresses the CSC's shared aspirations for the future (for 5-10 years +)

Principles

- Highlights core values that guide how the CSC will achieve its vision
- Will help to refine goals and strategies during the CERP process
- By starting from general vision and principles we can then work our way to specific actions for which we can hold each other and agencies of jurisdiction accountable.



“We Envision...”

- The CSC visions describe the future they see for the community in respects to air quality, air pollution, health and safety impacts.
- It also describes how the plan is to be used to accomplish this future vision.
- Finally, the vision highlights their overall core values (which are also echoed and described further in principles).

Principles

The principles are short phrases or statements reflecting core values, aspects, approaches the CSC expects to be woven through CERP and shape its outcome.

How to Begin forming your Visions and Principles?

- **Put it Together!** Start putting everything the CSC has been discussing from existing conditions and community experience together to begin the Planning Phase.
- **Get Prepared!** Start thinking about CERP plan directions and goal to discuss in June.
- **Roll up the Sleeves and Get Creative!** Developing Visions and Principles should be interactive and engaging.

Wrap up, Next Steps & Announcements

Feedback on Meeting & Next Steps for the CSC

Please fill out the post-meeting survey form.

Next Meeting will be **June 18, 2024**

It is important that you register on **Eventbrite** for each meeting so that we can make any required accommodations.

CSC Meeting #6 Tentative Agenda (June 18, 2024)

- Mapping report back
- Learn about the elements of a community emissions reduction plan
- Develop a vision for the plan
- Decide on the community boundaries
- Anything else?

Announcements

- Marie Harrison Environmental Justice Scholarship, applications due May 31, 2024
- Other announcements?

Thank You!

See You on June 18, 2024!!

