

# AIR POLLUTION RISK & VULNERABILITY TO HEALTH IMPACTS: A LOOK AT WEST OAKLAND

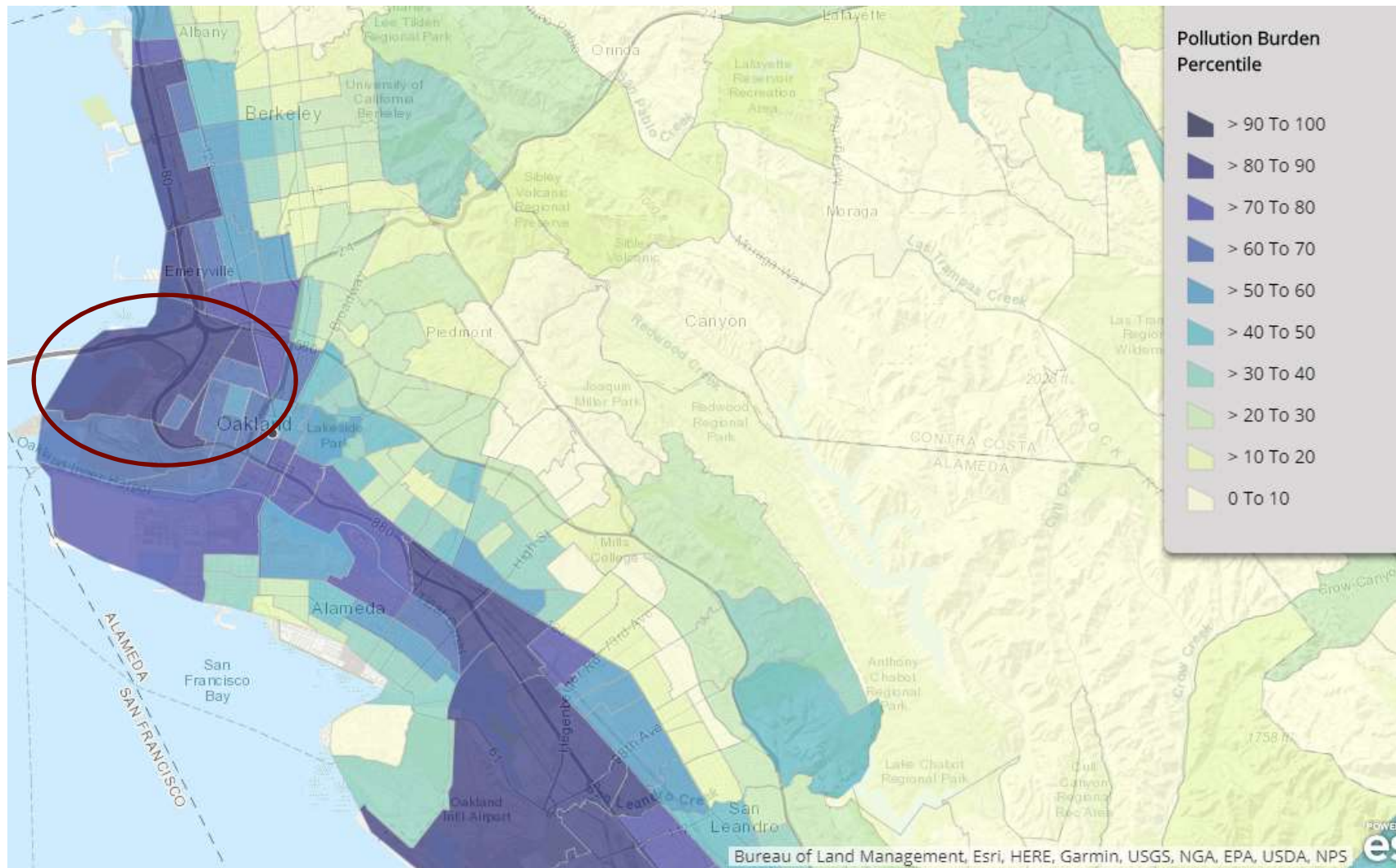
AB 617 Steering Committee Meeting

December 5th, 2018



West Oakland experiences **high levels of air pollution** from highways, the Port, & industrial facilities close to residents.

2

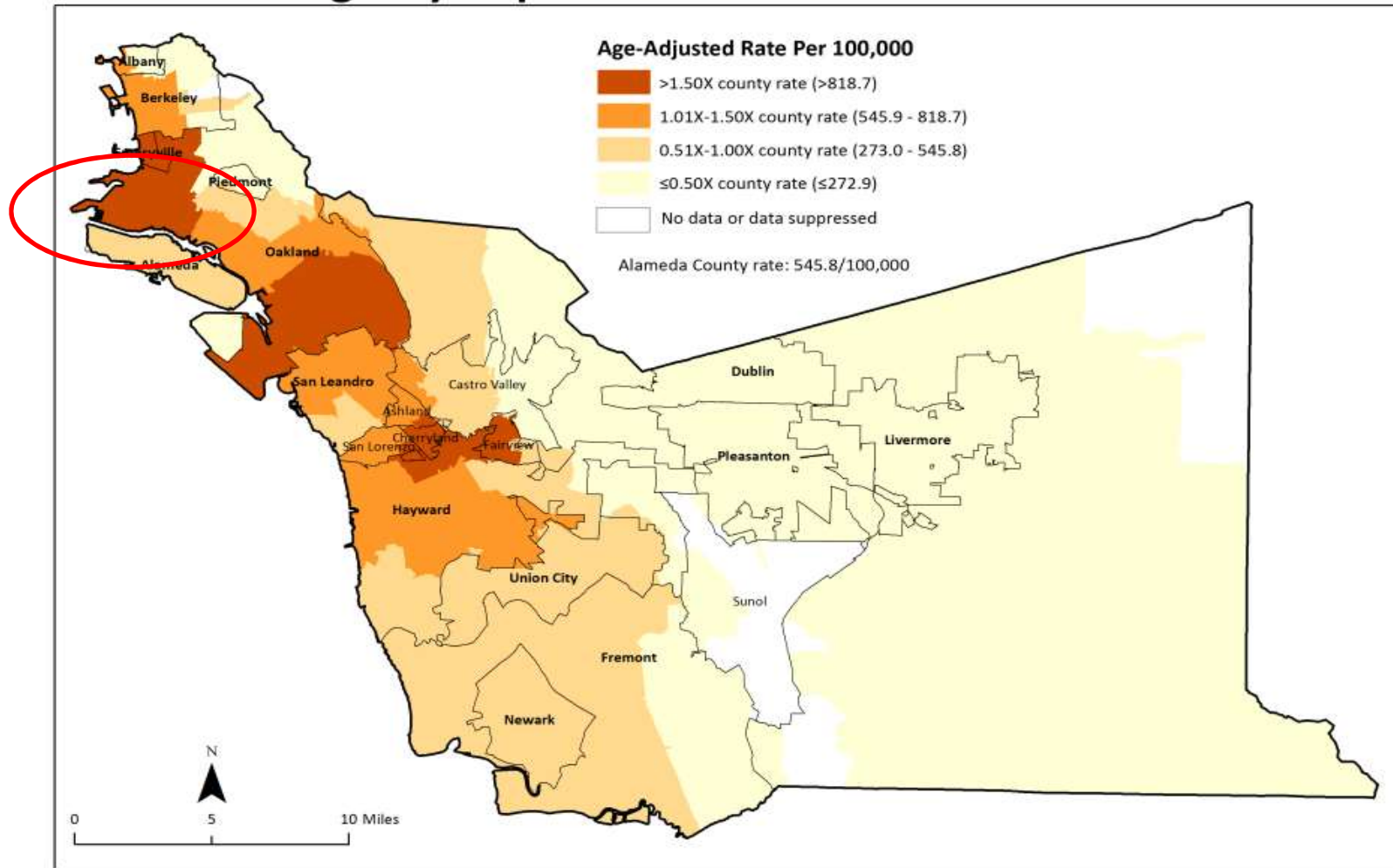


Source: OEHHA, CalEnviroScreen 3.0

West Oakland has a high burden of asthma emergency department and hospitalizations visits.

3

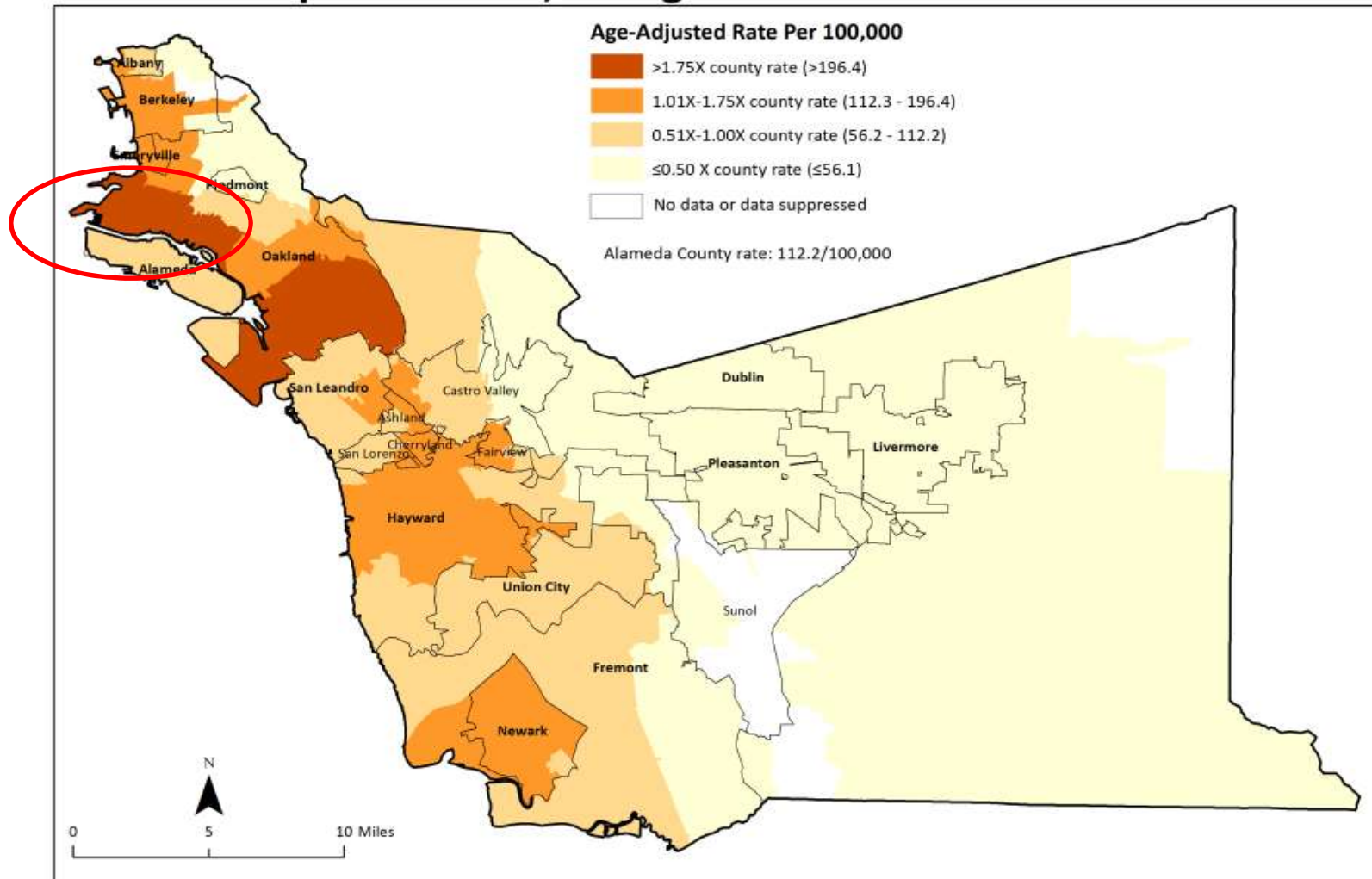
### Asthma Emergency Department Visits



Source: CAPE, with data from OSHPD, 2012-2014.

West Oakland has a high burden of asthma emergency department and hospitalizations visits.

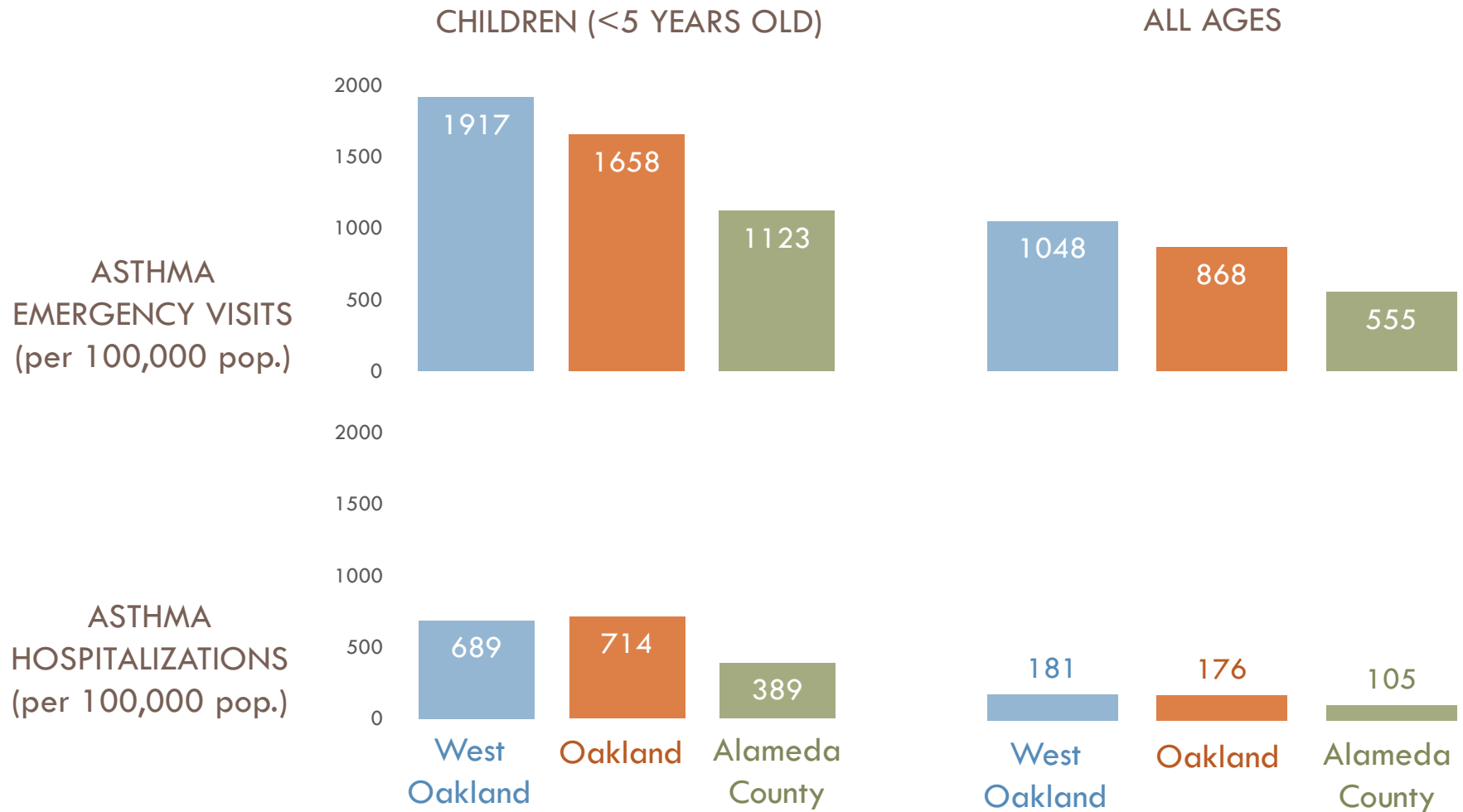
### Asthma Hospitalizations, All Ages



Source: CAPE, with data from OSHPD 2012-2014.

# Asthma hospitalization and emergency department visit rates are almost 2 times higher in West Oakland than for the County.

5



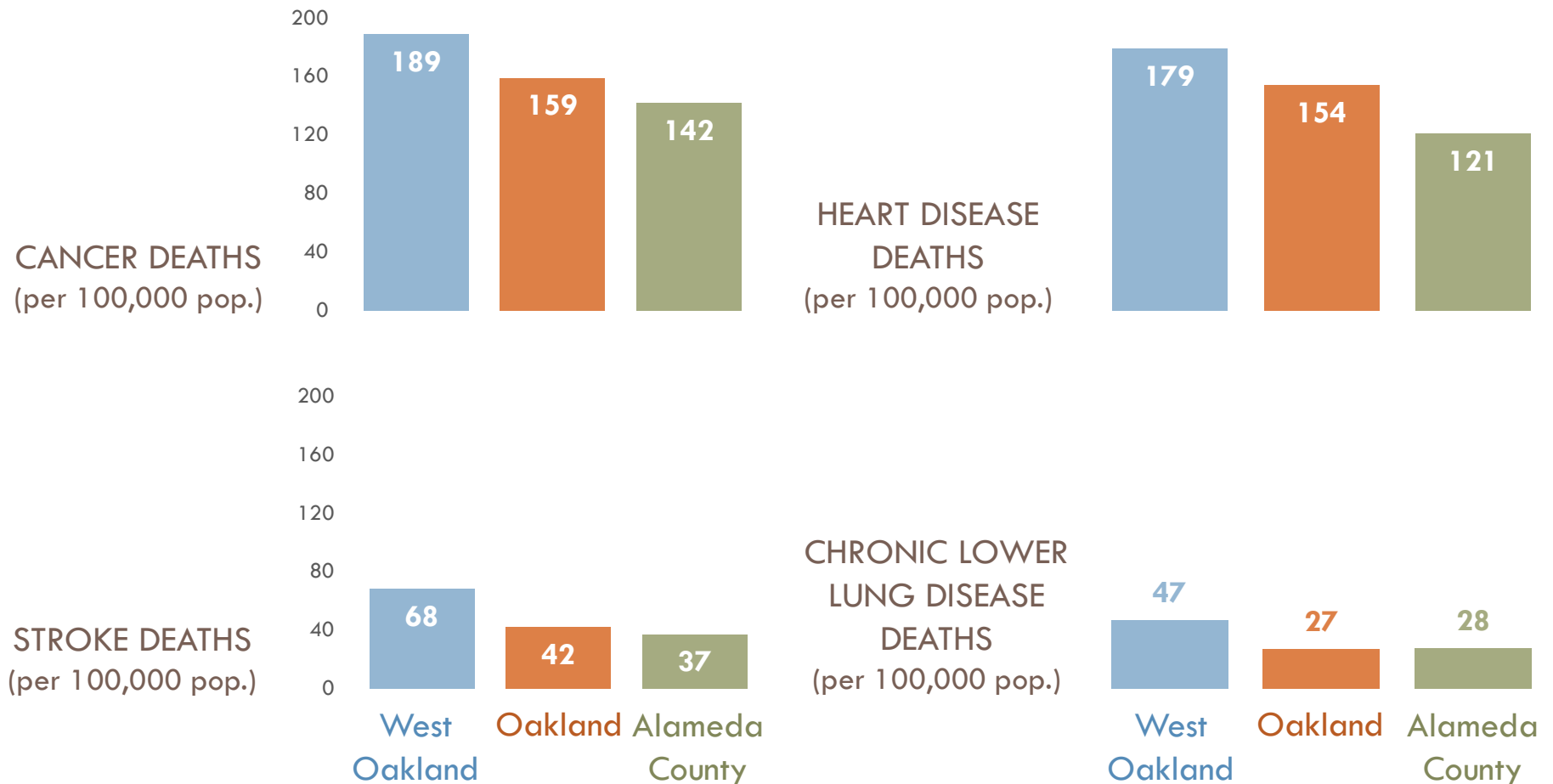
Cancer, heart disease, stroke and chronic lower respiratory disease are top 5 leading causes of death in West Oakland.

6

	<b>Leading Causes of Death in West Oakland</b>	<b>Percentage of all deaths</b>
➔	Cancer	22%
➔	Heart Disease	20%
	Unintentional Injuries	9%
➔	Stroke	7%
➔	Chronic Lower Respiratory Disease	5%
	Homicide	3%
	Diabetes	3%

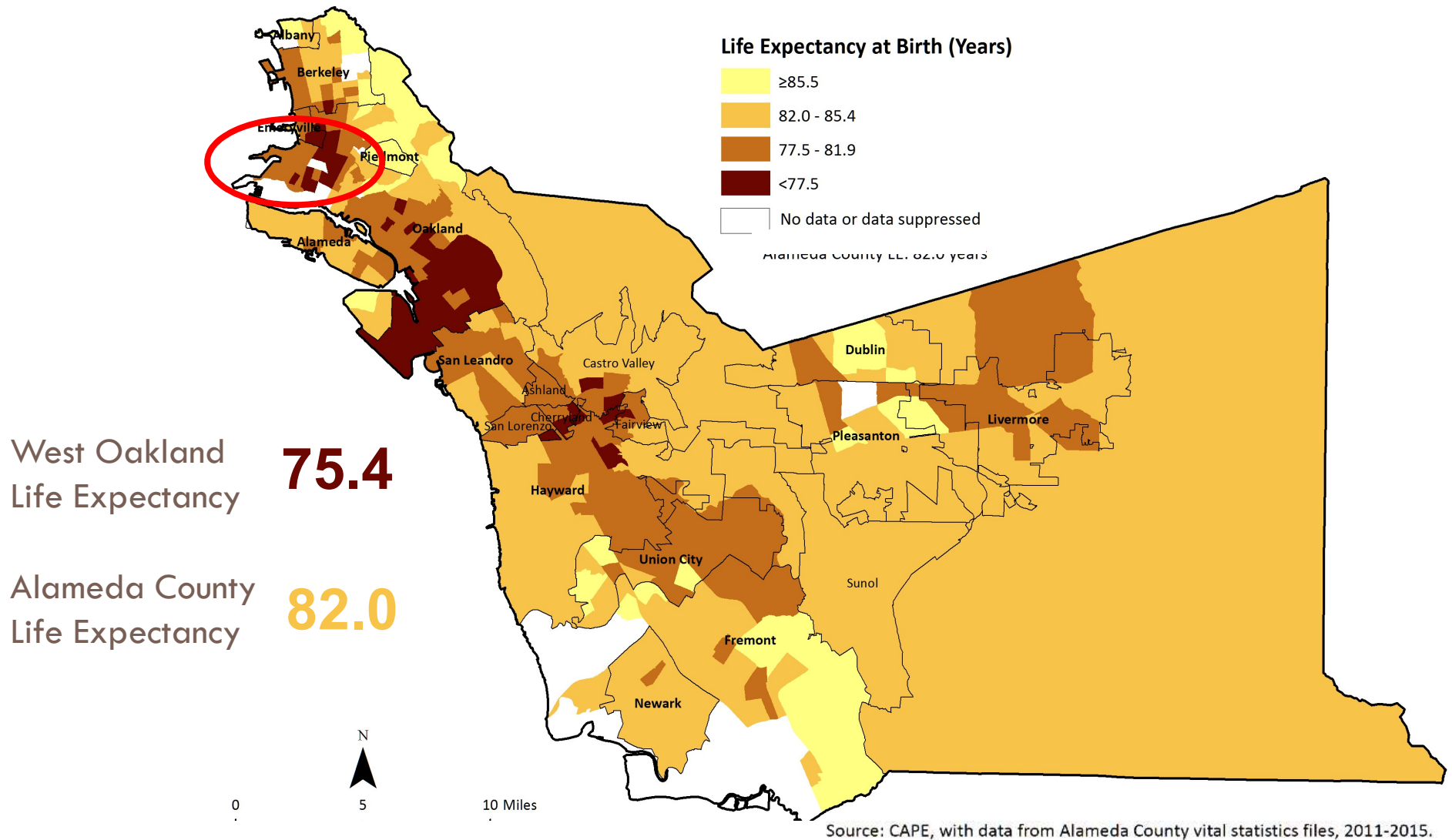
Those diseases are associated with air pollution, and West Oakland residents are dying from them at higher rates.

7





Due to cumulative health risks and impacts, life expectancy in West Oakland is 6.6 years less than in Alameda County.

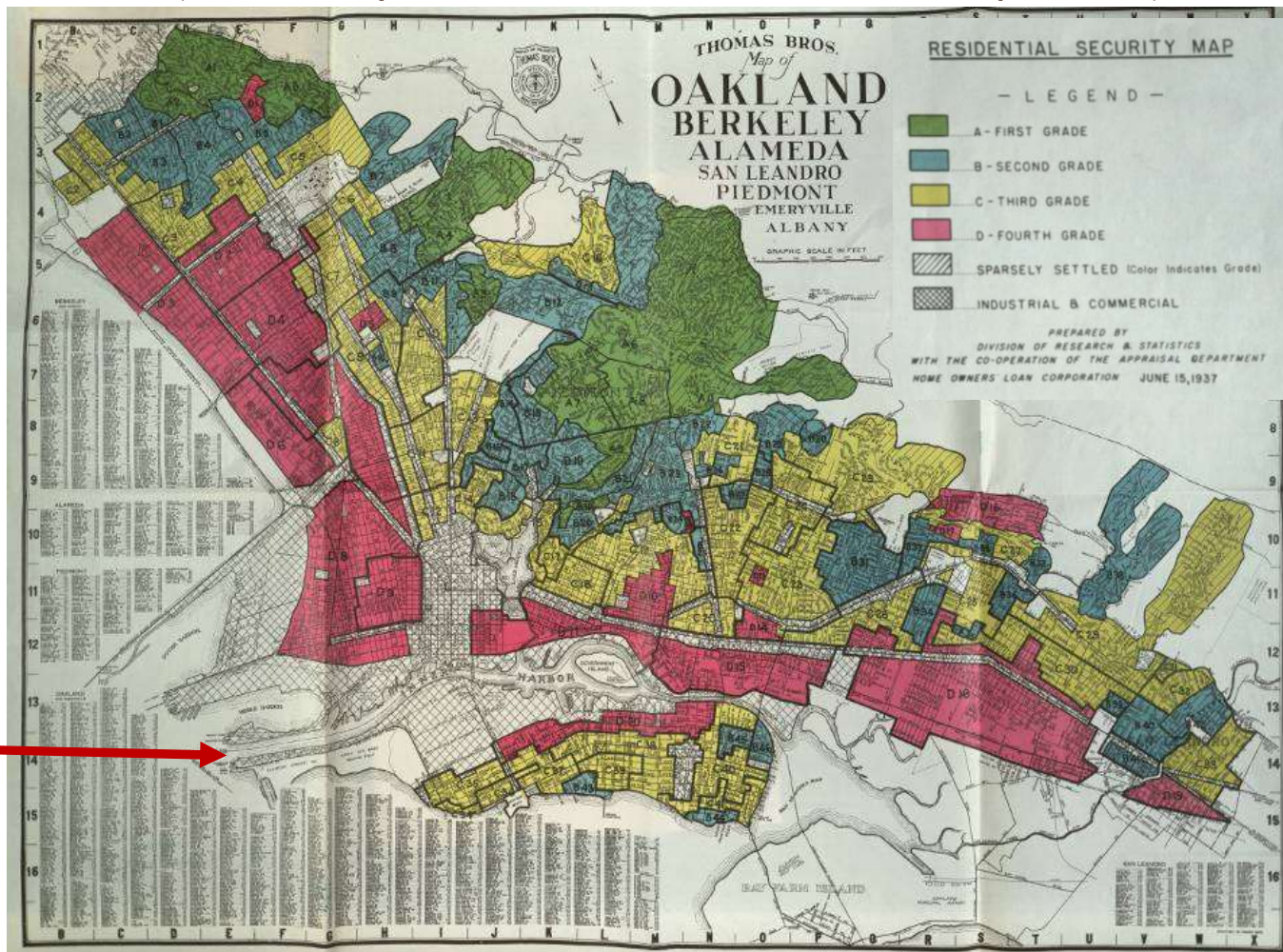




These health inequities did not happen overnight. They have deep roots in historical practices, like Racial Redlining.

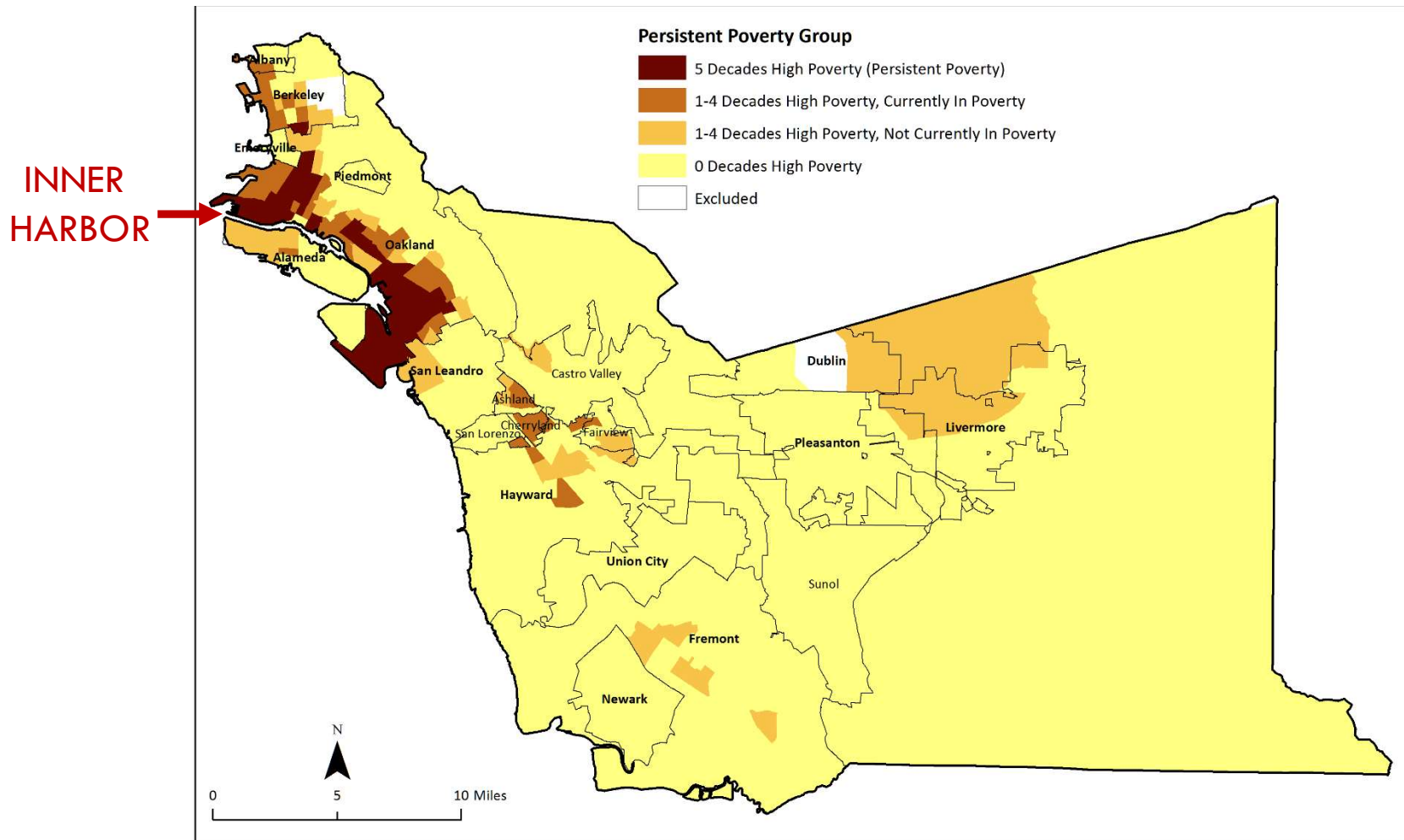
9

RESIDENTIAL SECURITY MAP, ALAMEDA COUNTY, 1937  
(Created by Federal Home Owners Loan Corporation)



Impoverished areas see long-standing disinvestment, meaning fewer resources and weaker infrastructure to support health.

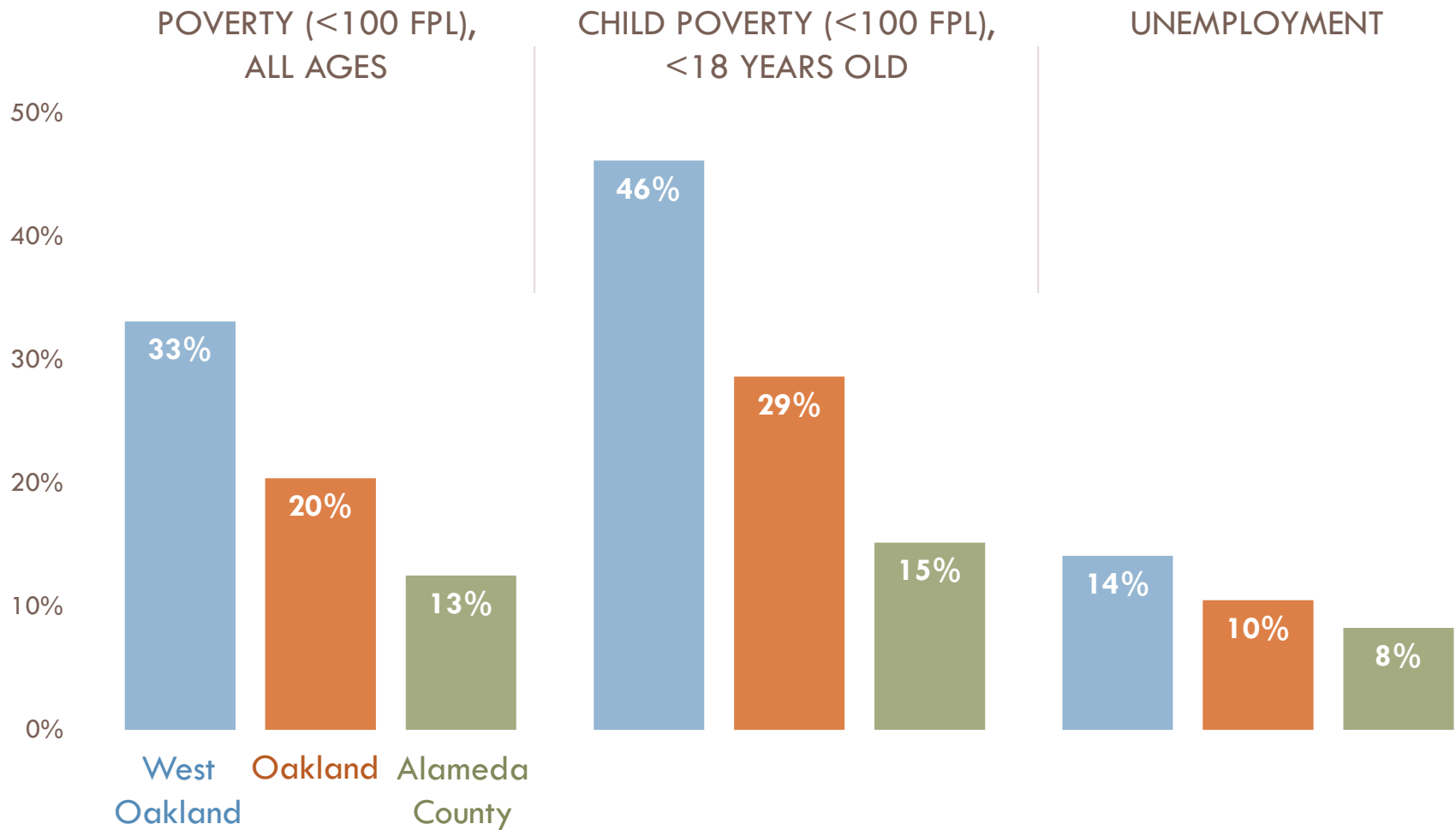
### Persistence of Neighborhood Poverty by Census Tract



Source: CAPE, with data from Geolytics Neighborhood Change Database, 1970-1990; Census 2000; and American Community Survey 2013 5-year files.

# Continued disinvestment in persistent, very high poverty areas continues to be a main barrier to health in West Oakland.

11



# AB 617 provides opportunities to reduce air pollution emissions and maximize health co-benefits in communities like West Oakland.

12





# Health indicators to consider when implementing and identifying strategies for AB 617

13

- ❑ Air pollution exposure
- ❑ Specific health risks associated with air pollution
  - ❑ Asthma, chronic lower respiratory disease
  - ❑ Stroke, heart attacks, cancer
- ❑ Cumulative health risks and impacts
  - ❑ All-cause mortality, life expectancy
- ❑ Social & economic factors that lead to extreme health vulnerability
  - ❑ Persistent & high poverty
  - ❑ Race & racism

# Alameda County Public Health Department

## Place Matters



14

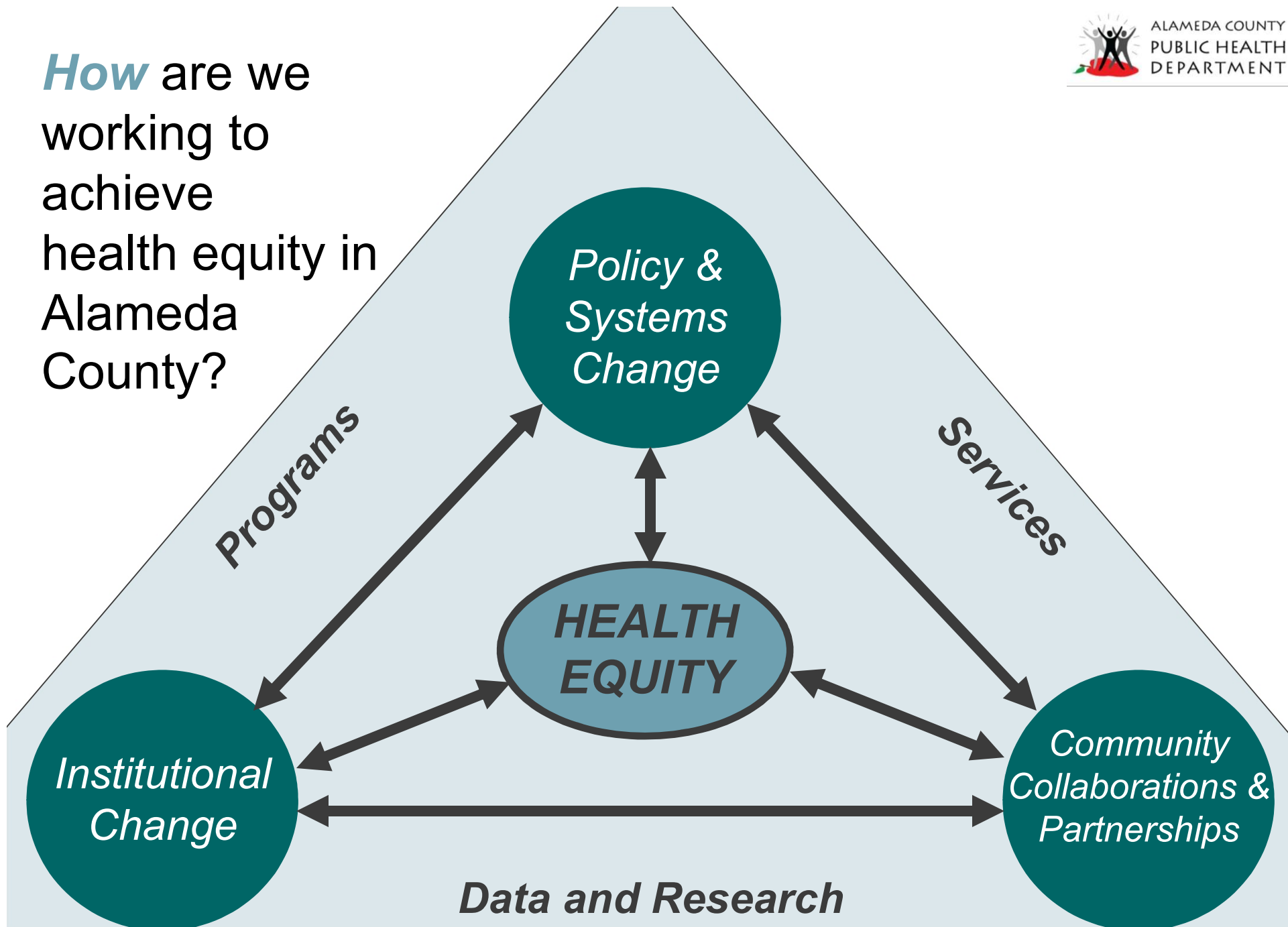
The Alameda County Place Matters team promotes health equity through community-centered local policy and systems change focused on education, economics, criminal justice, housing, land use, and transportation.





*Why* is it important for government to be involved in the movement for racial and health equity?

*How* are we working to achieve health equity in Alameda County?



*How* are we putting this into practice?

# Oakland Healthy Development Guidelines

*A set of policies and guidelines to support healthy and equitable development in Oakland*



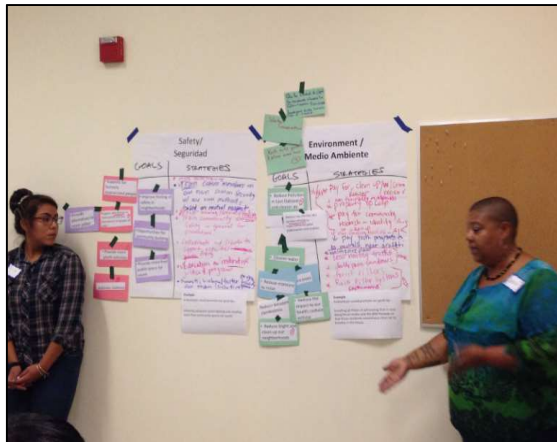
East Bay Housing Organizations



# Healthy Development Guidelines

## Core Principles

- Build an innovative partnership
- Model a process of community inclusion in planning process
- Create policy and guidelines to support healthy and equitable development for new development



# Healthy Development Guidelines Engagement Process

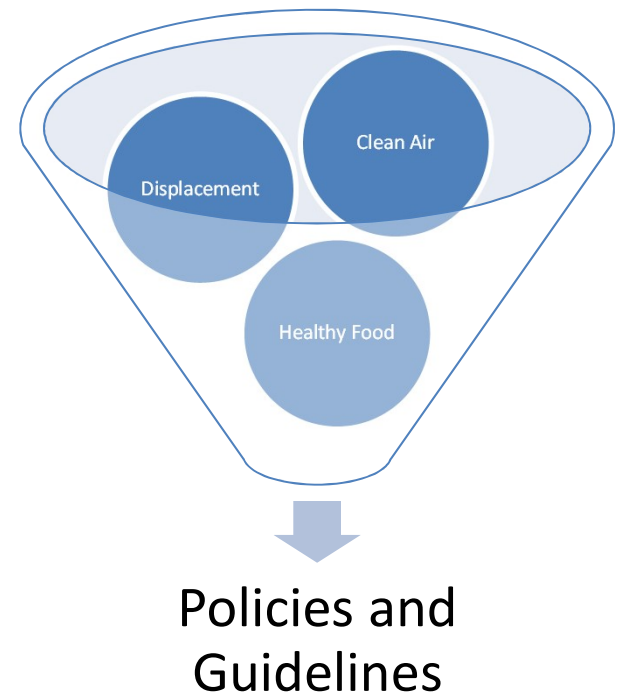




# Healthy Development Guidelines

## 7 Policy Areas

- Community, Culture and Safety
- Economic Opportunity
- Environmental Health
- Healthy Food
- Housing and Anti-displacement
- Recreation and Active Design
- Transportation Access



# Healthy Development Guidelines

## Progress to date

- Some Guidelines are currently being implemented as Standard Conditions of Approval by the City of Oakland's Planning and Building Department.
- Others will be implemented over time as City policy

