

# Draft Revised Priority Communities

**Phil Martien, Ph.D.**

**Bay Area Air Quality Management District**

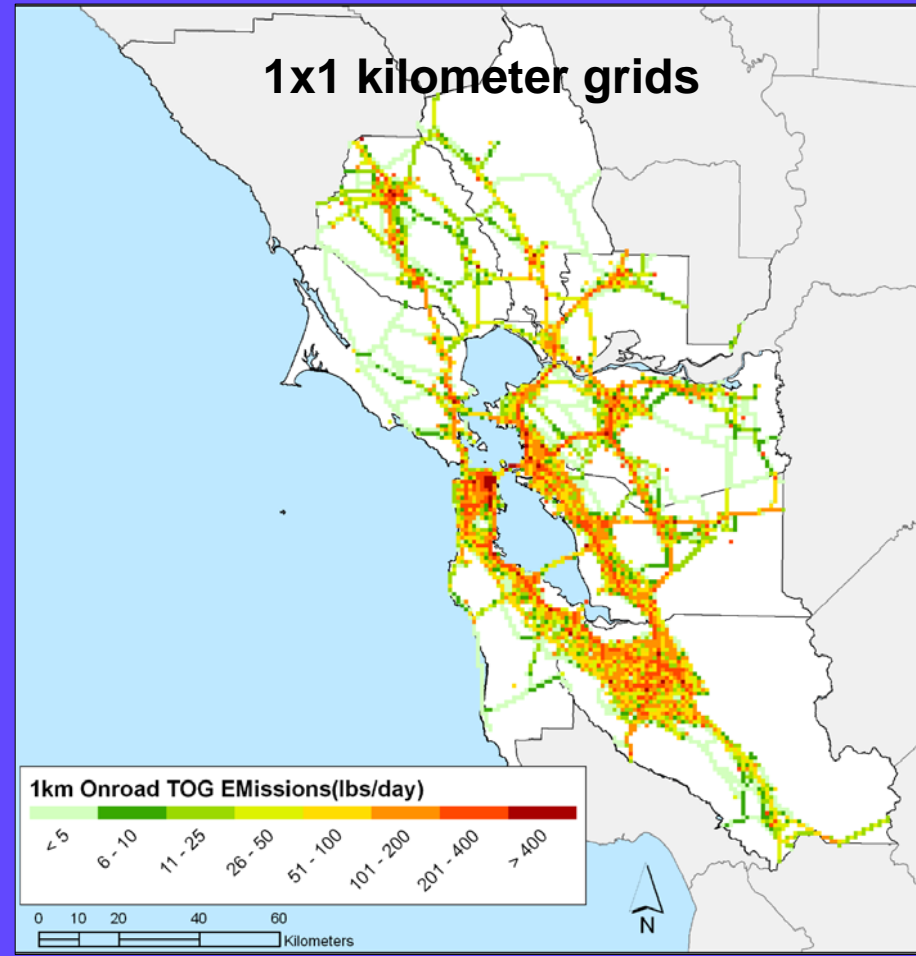
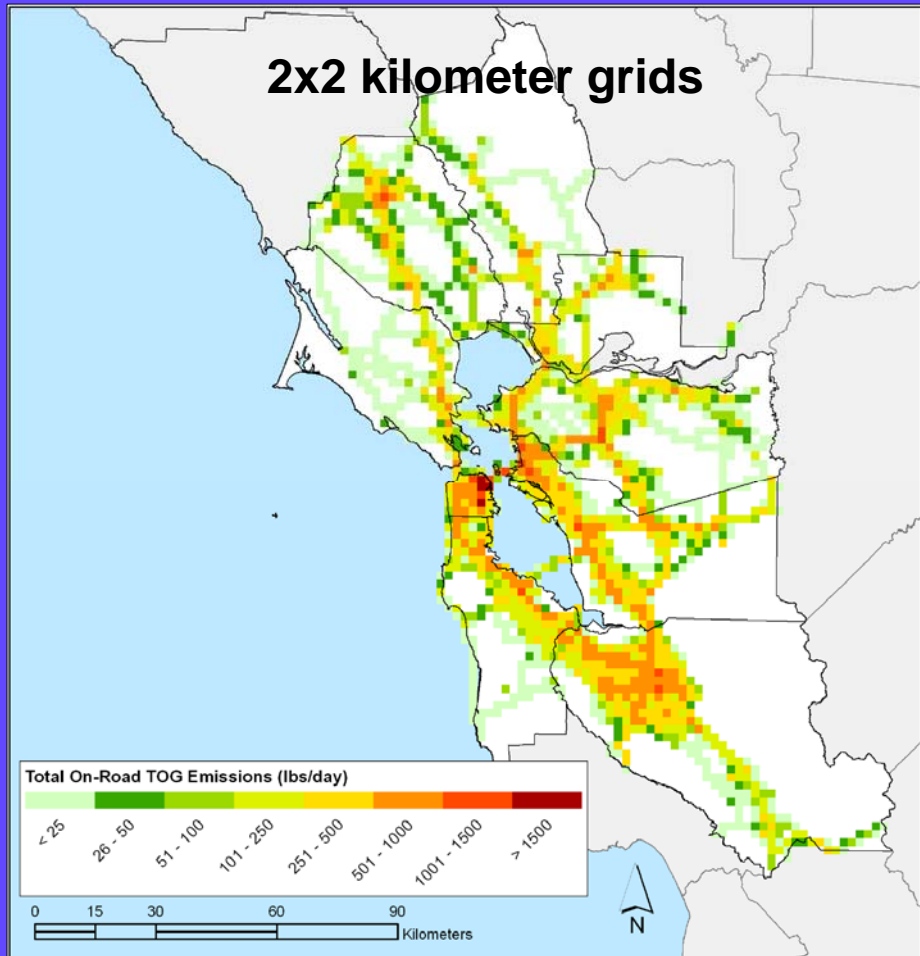
**CARE Task Force Meeting**

**April 21, 2009**

# Overview

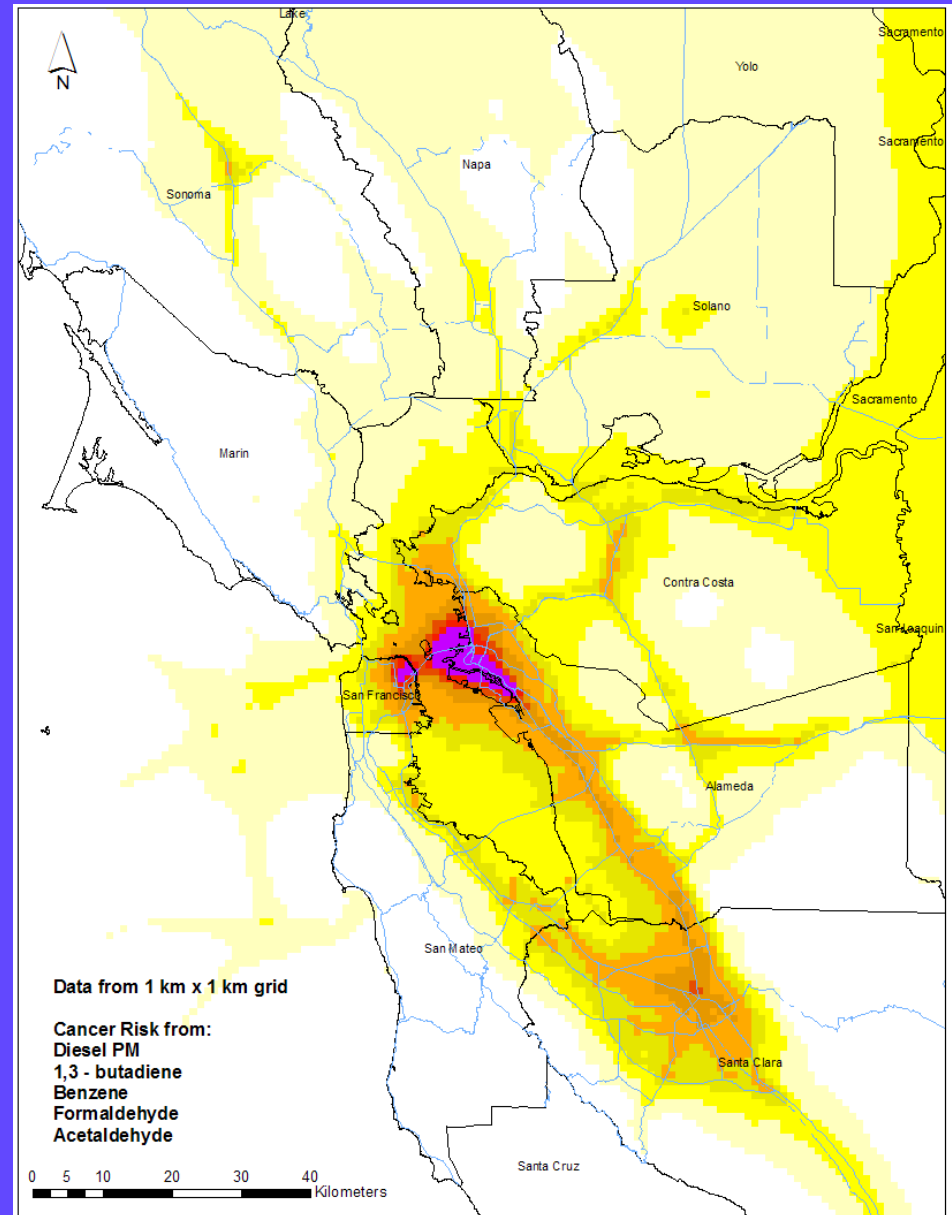
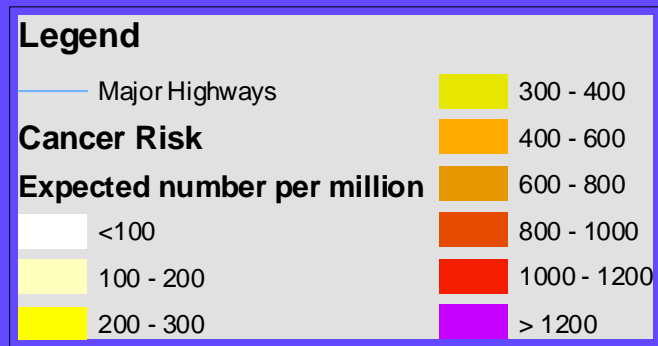
- Updated regional toxics modeling
- Revised methodology for developing priority communities maps
- Updated maps for year 11 Carl Moyer grants program
- Other applications and considerations

# Update Emissions Estimates



# Updated Toxics Modeling

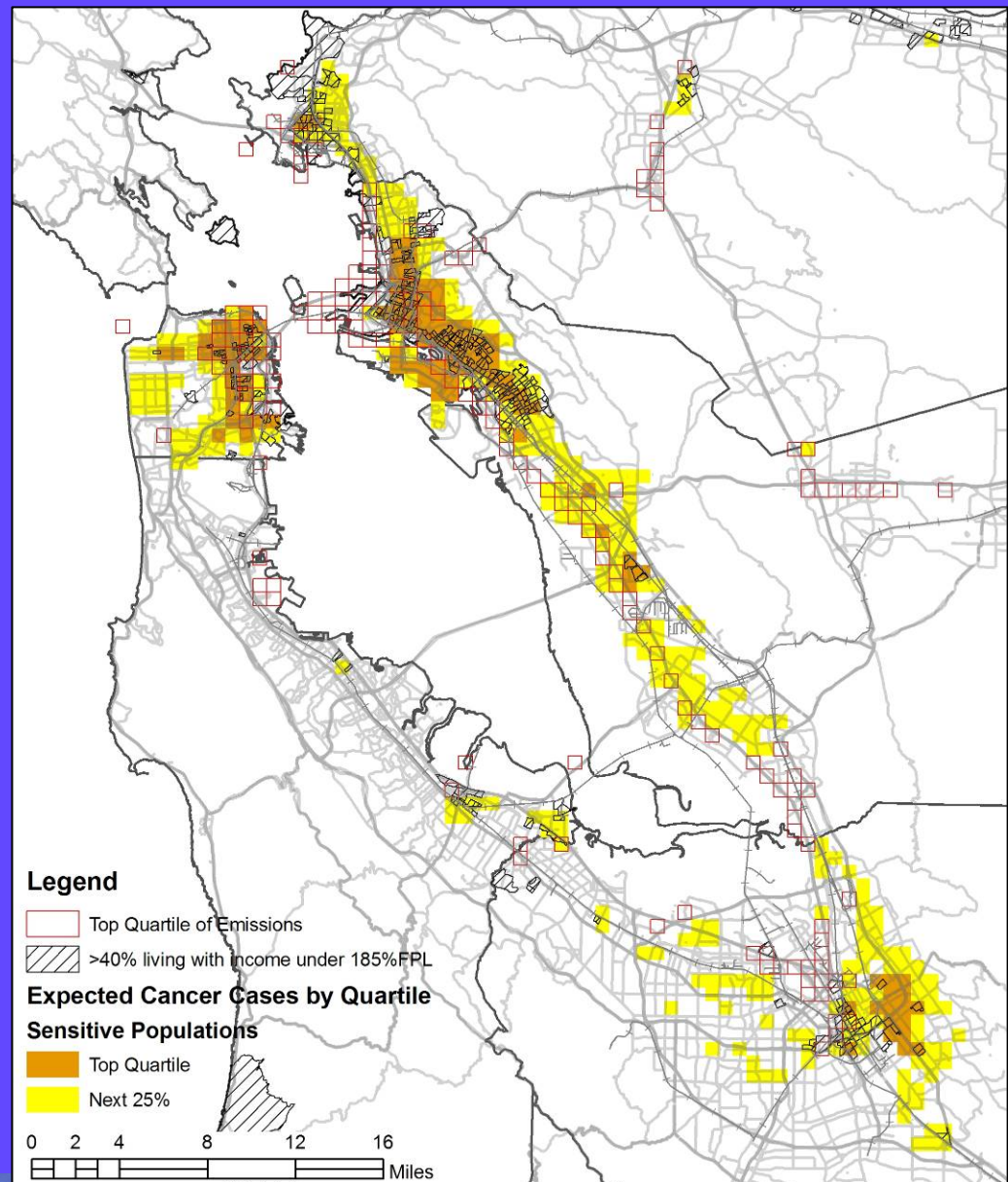
- Expected cancer incidents per million people—70 year exposure
- Modeled concentrations weighted by health risk of each compound



April 21, 2009

# Revised Mapping Inputs

- Factors to consider
  - Modeling results for sensitive population (youth & senior) exposure to major cancer-causing compounds (top 50%)
  - Cancer-risk-weighted emissions (top 25%)
  - Family income (more than 40% of population under 185% FPL)
  - Specific boundaries may vary
    - Purpose
    - Community Input



April 21, 2009



# Revised Mapping Methods

- Identify low-income areas that intersect top 50% exposure cells (yellow or orange) AND are within one grid cell from a top 25% emission cell (red outline)
- Construct boundaries along major roads or highways that encompass nearby high emission cells and low income areas
- Use knowledge of local areas to make judgments
  - select bounding roadways
  - recognize that emissions, modeling, demographic data may not perfectly reflect true conditions
- Use the above boundaries for year 11 of Carl Moyer projects
- Refine these boundaries with community input and feedback

# Revised Maps for Grant Funding

- Carl Moyer Program revised community boundaries

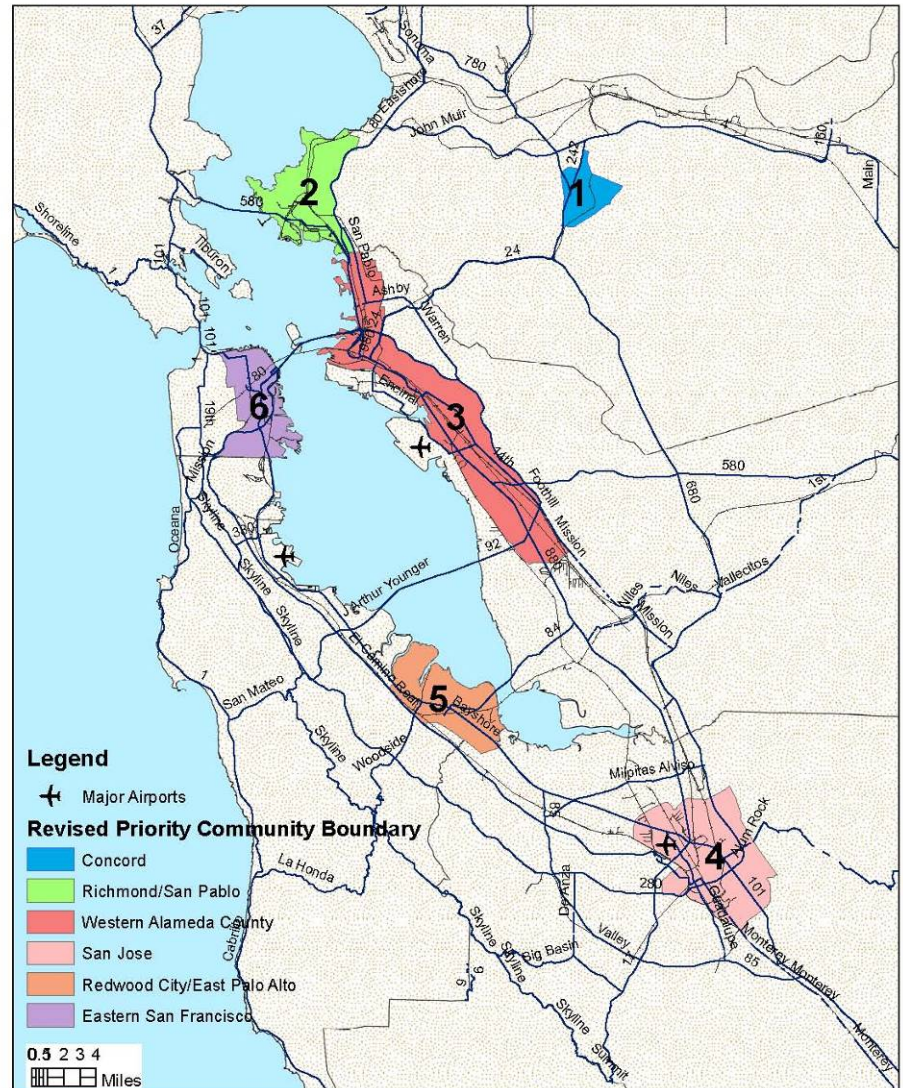
- Concord
- Richmond/San Pablo
- Western Alameda County
- San Jose
- Redwood City/East Palo Alto
- Eastern San Francisco

April 21, 2009



BAY AREA AIR QUALITY MANAGEMENT DISTRICT

Revised Priority Communities for Grant Funding



March 25, 2009

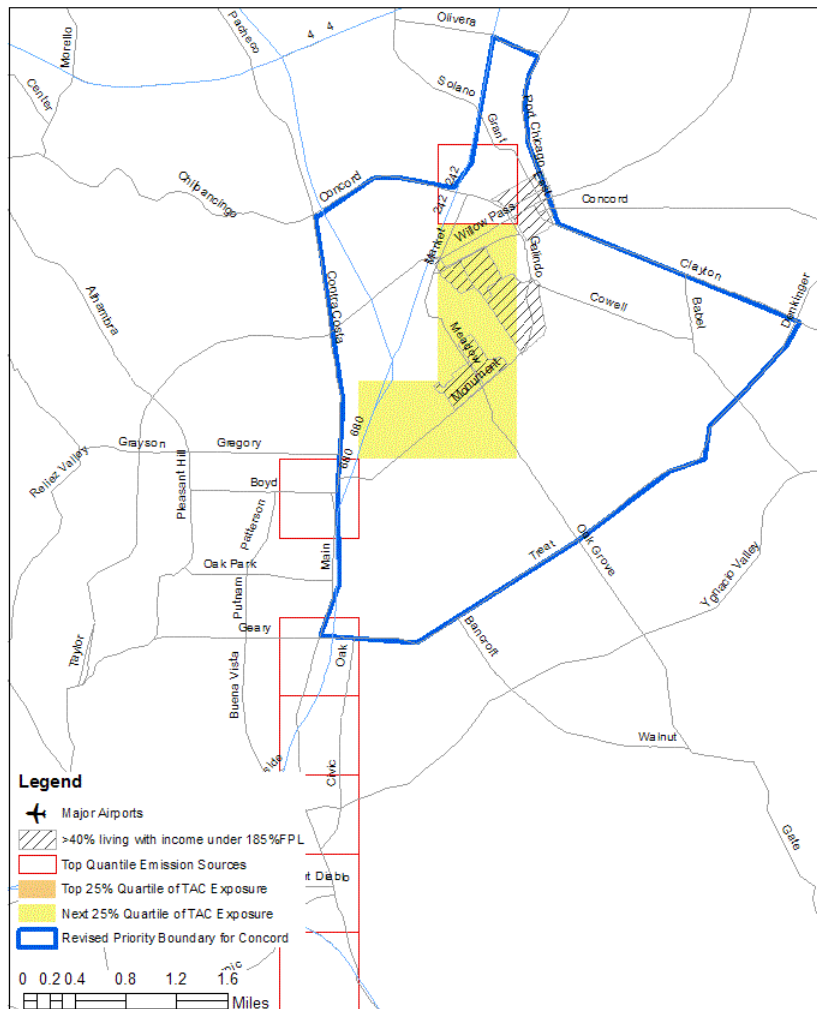
Lau.../Grant communities.mxd

# Concord



## BAY AREA AIR QUALITY MANAGEMENT DISTRICT

Exposure to Toxic Air Contaminants of Sensitive Populations in Concord  
in the Year 2005 Based on a Weighted Product of Population and Emissions



Note: Sensitive population includes people under the age of 18 and over 64 years old.  
Toxic air contaminants include diesel PM, 1,3-butadiene, formaldehyde, and acetaldehyde.

April 17, 2009

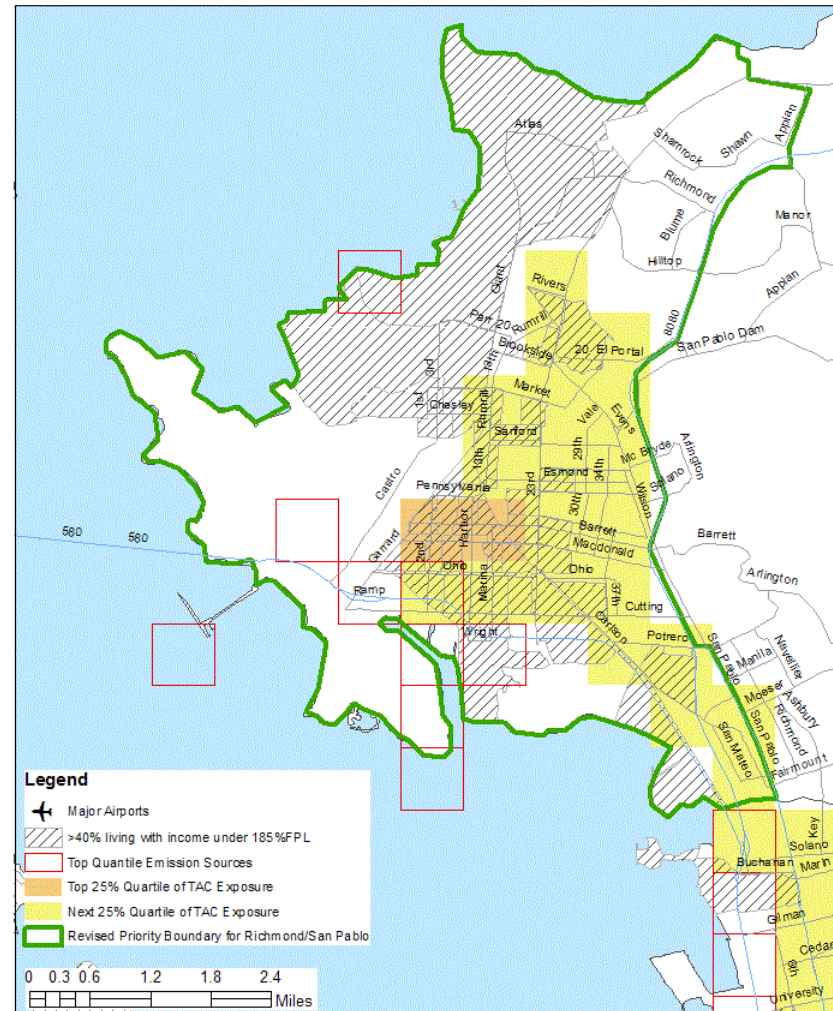


# Richmond/ San Pablo



## BAY AREA AIR QUALITY MANAGEMENT DISTRICT

Exposure to Toxic Air Contaminants of Sensitive Populations in Richmond/San Pablo  
in the Year 2005 Based on a Weighted Product of Population and Emissions



Note: Sensitive population includes people under the age of 18 and over 64 years old.  
Toxic air contaminants include diesel PM, 1,3-butadiene, formaldehyde, and acetaldehyde.

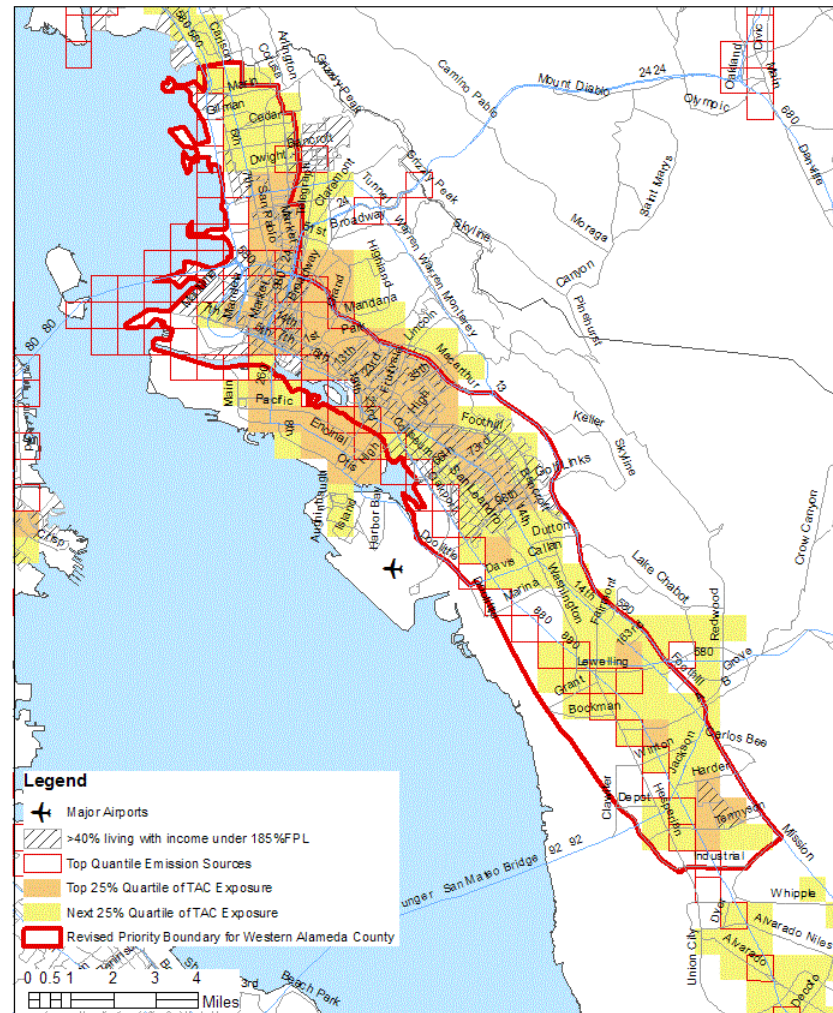
April 17, 2009

# Western Alameda County



## BAY AREA AIR QUALITY MANAGEMENT DISTRICT

Exposure to Toxic Air Contaminants of Sensitive Populations in Western Alameda County  
in the Year 2005 Based on a Weighted Product of Population and Emissions



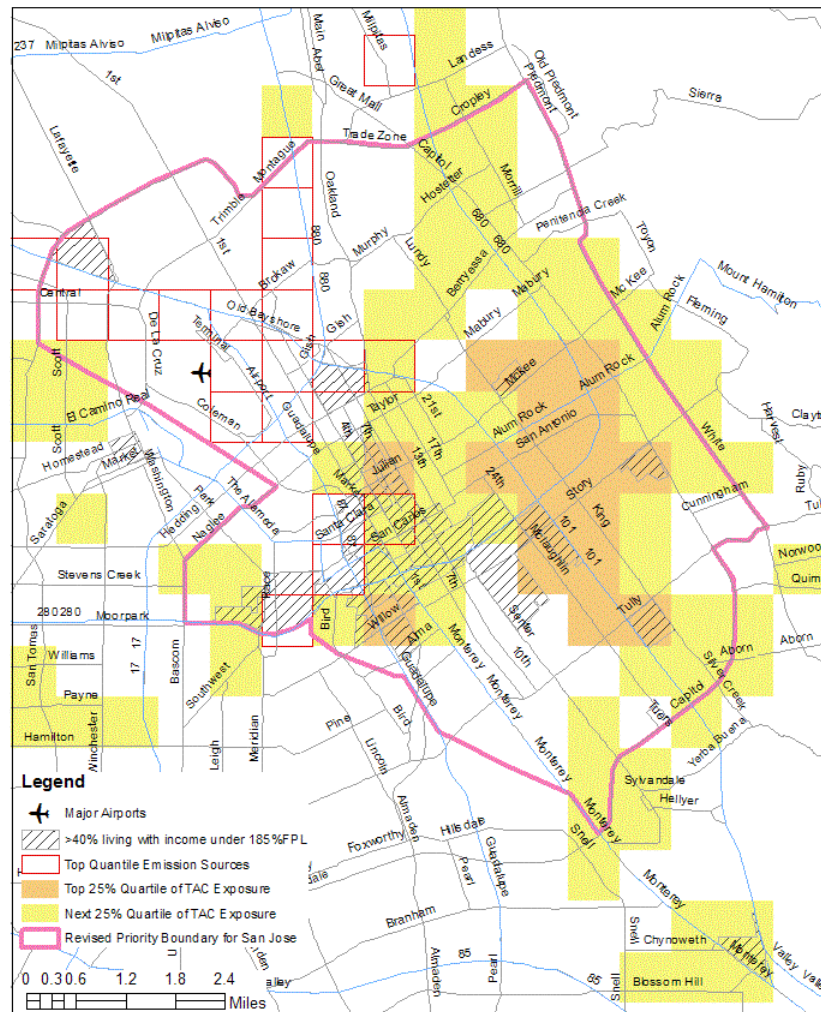
Note: Sensitive population includes people under the age of 18 and over 64 years old.  
Toxic air contaminants include diesel PM, 1,3-butadiene, formaldehyde, and acetaldehyde.

# San Jose



## BAY AREA AIR QUALITY MANAGEMENT DISTRICT

Exposure to Toxic Air Contaminants of Sensitive Populations in San Jose  
in the Year 2005 Based on a Weighted Product of Population and Emissions



Note: Sensitive population includes people under the age of 18 and over 64 years old.  
Toxic air contaminants include diesel PM, 1,3-butadiene, formaldehyde, and acetaldehyde.

April 17, 2009

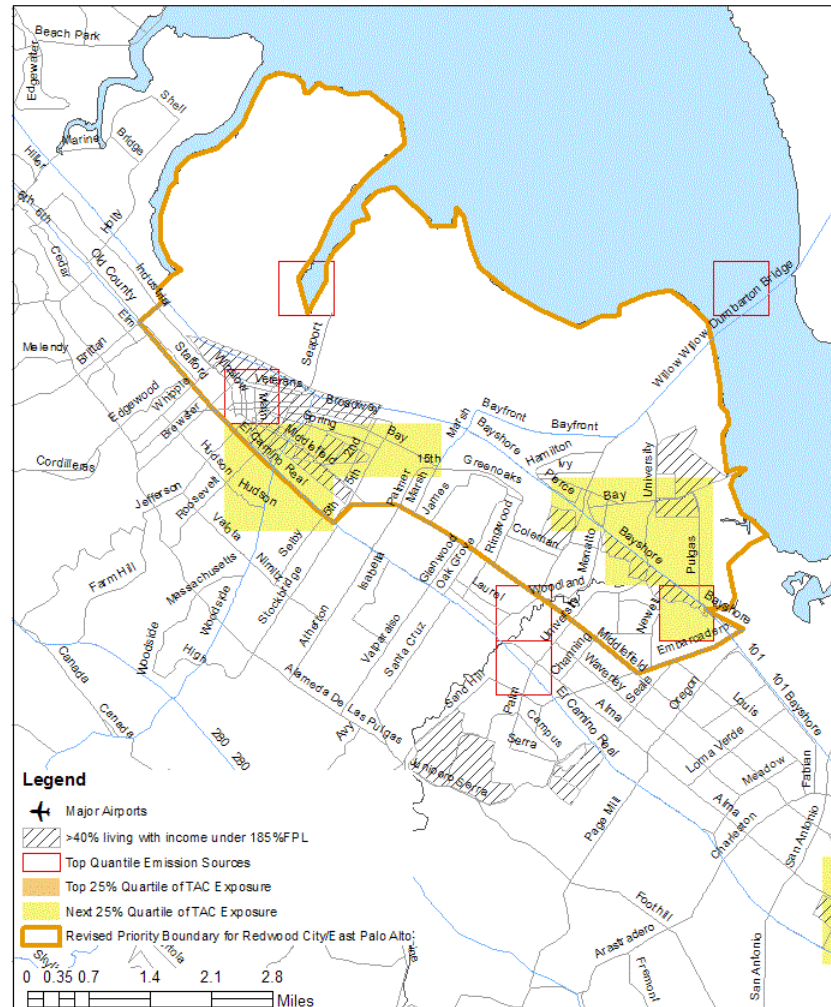


# Redwood City/East Palo Alto



## BAY AREA AIR QUALITY MANAGEMENT DISTRICT

Exposure to Toxic Air Contaminants of Sensitive Populations in Redwood City/East Palo Alto in the Year 2005 Based on a Weighted Product of Population and Emissions



Note: Sensitive population includes people under the age of 18 and over 64 years old.  
Toxic air contaminants include diesel PM, 1,3-butadiene, formaldehyde, and acetaldehyde.

April 17, 2009

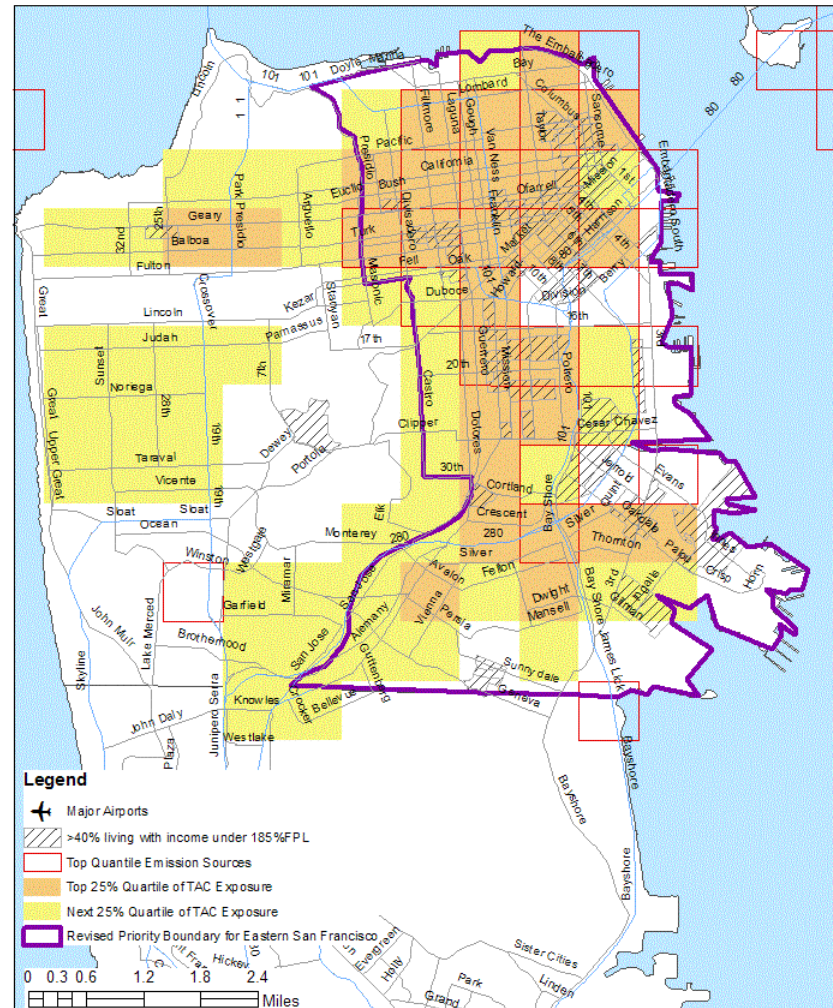


# Eastern San Francisco



## BAY AREA AIR QUALITY MANAGEMENT DISTRICT

Exposure to Toxic Air Contaminants of Sensitive Populations in Eastern San Francisco  
in the Year 2005 Based on a Weighted Product of Population and Emissions



Note: Sensitive population includes people under the age of 18 and over 64 years old.  
Toxic air contaminants include diesel PM, 1,3-butadiene, formaldehyde, and acetaldehyde.

April 17, 2009

# Next Steps

- Identify other potential applications, such as
  - Outreach
  - Enforcement activities
  - Enhanced monitoring and emissions tracking/reporting
  - Indirect source review
  - More stringent permit requirements for new and modified sources
- Consider varying the boundaries for specific applications
- Seek input