



BAY AREA
AIR QUALITY
MANAGEMENT
DISTRICT

Planning Healthy Places

Public Workshop / Webcast
March 17, 2016

Webcast Participants

- Please check-in: <http://goo.gl/forms/eqT9JNCx0o>
- Email: *PlanningHealthyPlaces@baaqmd.gov* with comments and questions
- Input from participants via webcast will be addressed at the end of the presentation



Summary

- Guidance to provide policies and tools to inform local plans
- Support regional, local efforts to promote efficient land use planning
- Support State initiatives
- Collaborative process

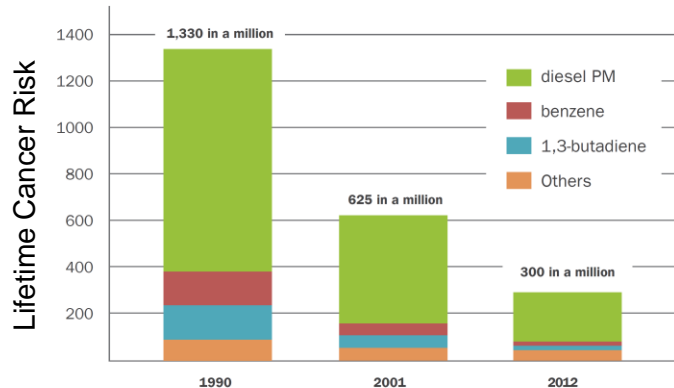


Background

Bay Area air pollution continues to decrease:

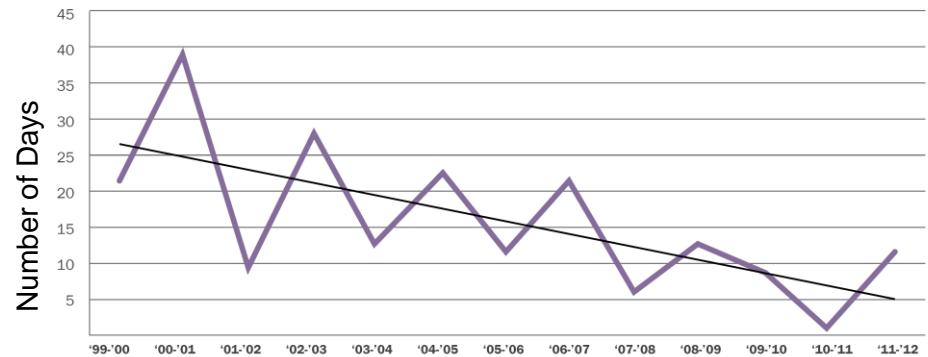
- Cancer risks from TAC's dropped by 78% between 1990 and 2012
- PM_{2.5} concentrations have been significantly reduced

Estimated Bay Area lifetime cancer risk from toxic air contaminants, based on air pollution measurements★



★ Improving Air Quality and Health in Bay Area Communities, BAAQMD, April 2014

Number of winter days over the current national 24-hour PM_{2.5} standard (35 µg/m³), November 15–February 15★



Health Impacts

Disproportionately impacted areas persist, higher levels of fine particulate matter (PM) & toxic air contaminants (TACs) near freeways and other sources

Health Impacts:

- Increased premature death
- Asthma development in children
- Increased non-asthma respiratory symptoms
- Decreased birth weight

“The takeaway is that we need to begin to develop policies that protect people from these exposures, through improved air filtration, improved community design...and not putting children’s playgrounds and bike paths near highways.”

–Doug Brugge, Professor of Public Health, Tufts University School of Medicine



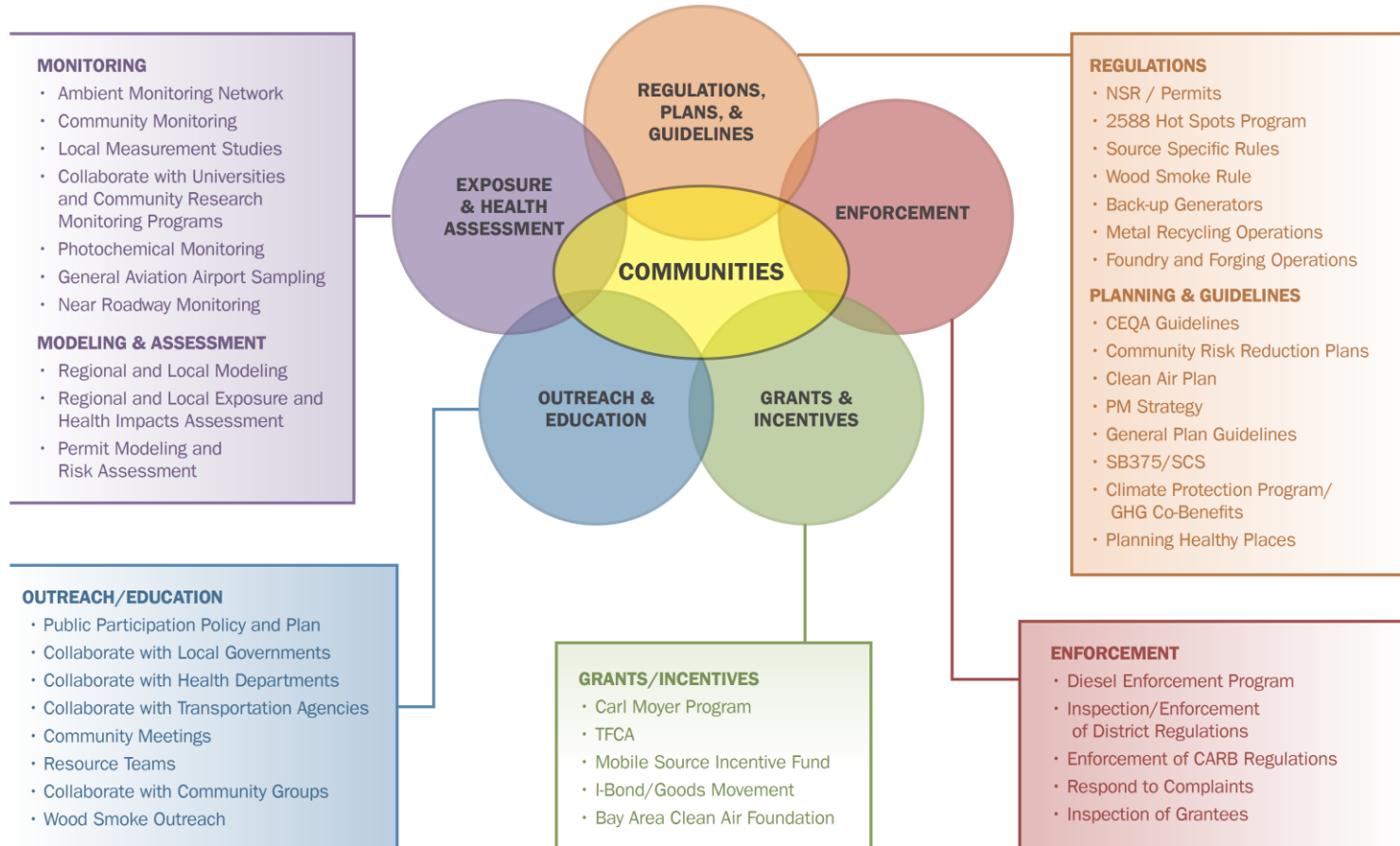
Healthy Infill

- Infill, TOD is vital to reduce vehicle use, and air pollution and GHGs
- Air District seeks to support infill development and reduce transportation emissions, while reducing local exposure to air pollution and protecting sensitive populations from potential health risks
- Seek to encourage that “healthy infill” is addressed early in planning process, in local plans



Air District Efforts to Reduce Air Pollution

The Clean Air Communities Initiative integrates consideration of impacted communities into many Air District programs



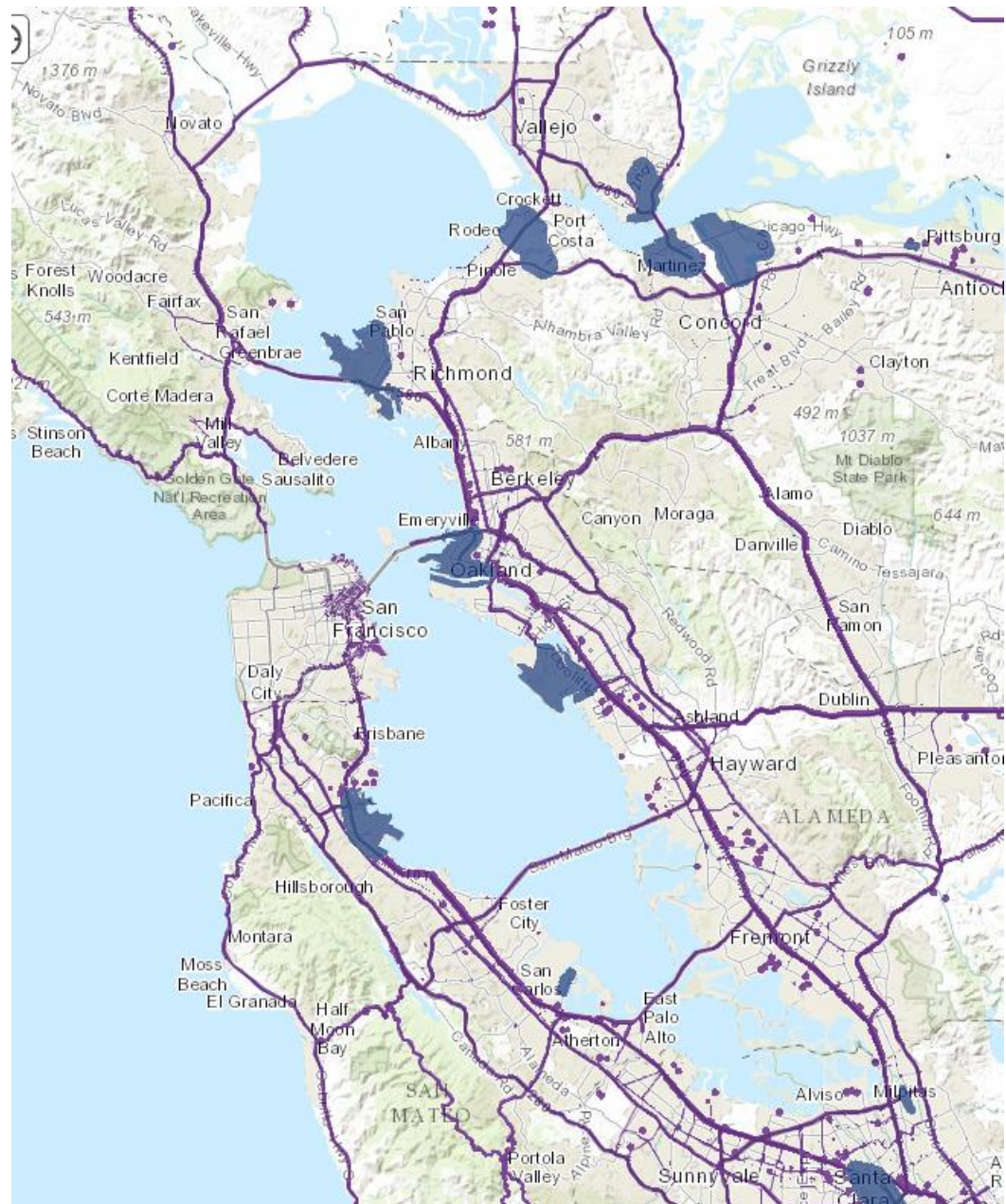
Planning Healthy Places

- Guidance document for local governments
- Encourage local governments to address and minimize potential local air pollution early in the planning process
- Provide tools and information, including:
 - Detailed maps of local sources of air pollution
 - “Best practices” to minimize exposure
 - Strategies to reduce emissions
 - Examples of local governments addressing local air quality
- Incorporate in local plans and ordinances
- Promote infill development while protecting public health



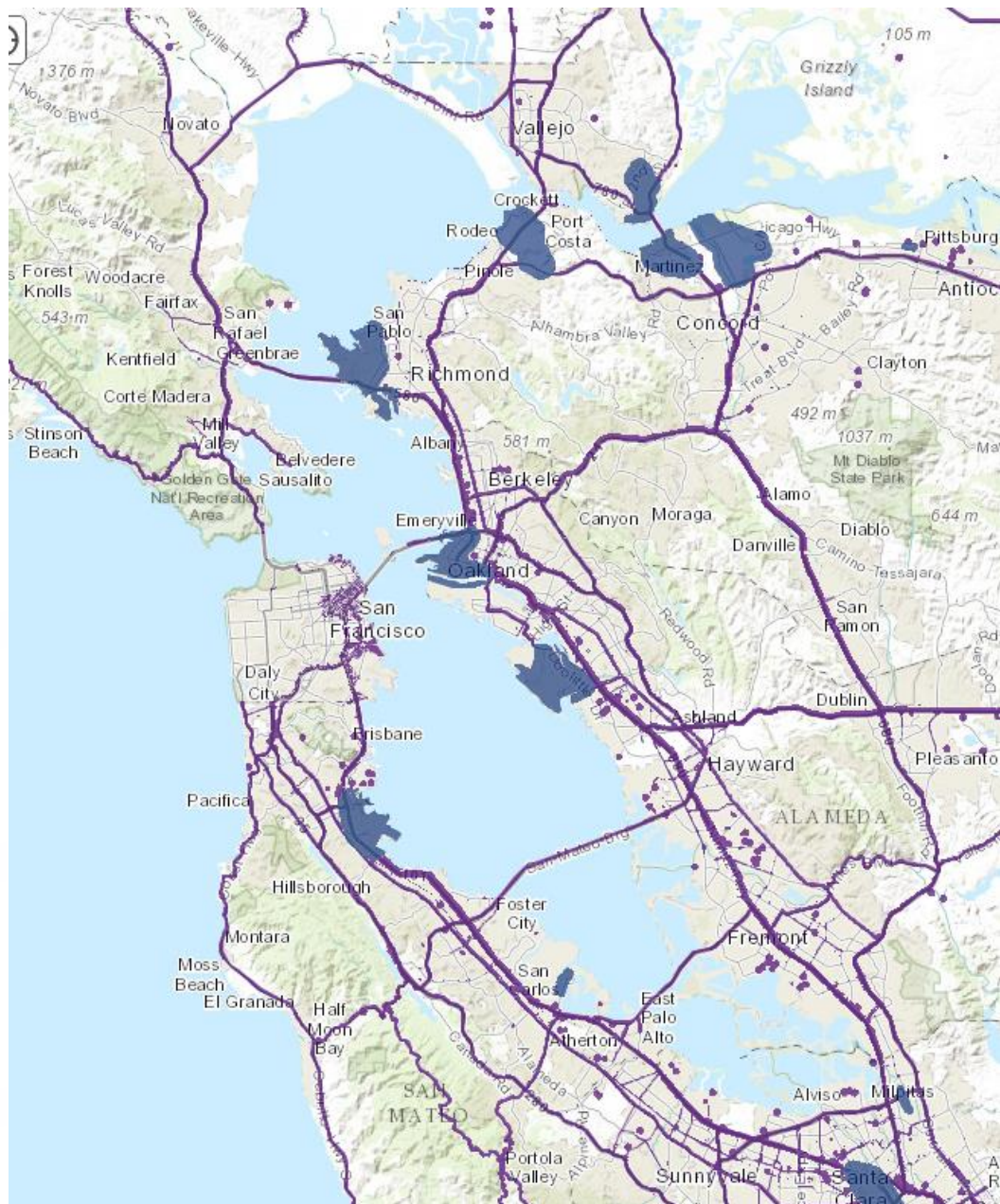
Maps

- Cumulative analysis of all sources of mobile + stationary air pollution
- Show areas with elevated levels of TACs, fine PM
- Interactive, web-based
- Incorporates San Francisco Article 38 maps



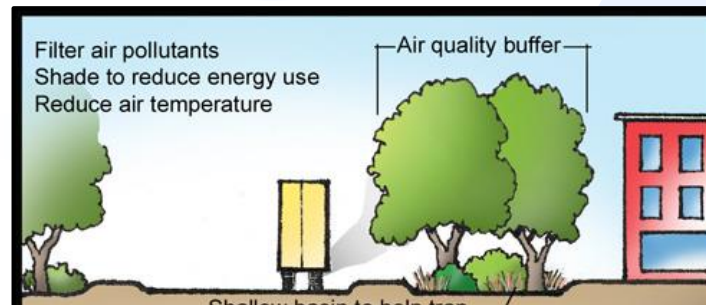
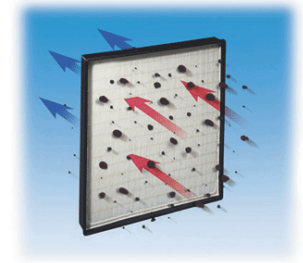
Maps

- Purple areas: Implement best practices to reduce exposure and emissions
- Blue areas: Conduct air quality analysis to assess air pollutant levels and extent to which measures can reduce potential health risks



Best Practices to Reduce Exposure

- Feasible, relatively low cost, and effective at reducing exposure to air pollution, thereby minimizing potential adverse health effects
- Best Practices:
 - Air filtration
 - Dense tree plantings
 - Alternative truck routes
 - Building & site design
 - Project phasing
 - Health protective distances, as feasible



Best Practices to Reduce Emissions

- Local actions can complement regional and State programs to reduce air pollution
- Best Practices:
 - Retrofit generators
 - Electrify loading docks
 - Transportation demand management strategies
 - Promote EV plug-in stations
 - Limit idling times



Case Studies

- City of San Francisco
 - *Article 38 Ordinance (requires air filtration)*
 - *Clean Construction Ordinance*
 - *Community Risk Reduction Plan*
- City of Oakland
 - *Standard Conditions of Approval*
- Cities of San Jose, Richmond, Hayward and Santa Clara
 - *General Plan policies related to air quality*
 - *Examples: promote replacement of non-EPA certified fireplaces & woodstoves; promote measures such as air filtration, proper siting criteria, and more stringent building performance standards to protect residents*



Links to Regional and State Initiatives

- Support Plan Bay Area
 - Inform policy narrative
 - Inform funding programs, other regional PBA implementation mechanisms
 - Aid community outreach on PBA
 - Support city, county plans to implement PBA
- Support State initiatives
 - SB 375, Sustainable Communities Strategy
 - Air Resources Board *Air Quality and Land Use Handbook*
 - Air Resources Board *Near-Roadway Mitigation Technical Advisory*
 - Office of Planning & Research *General Plan Guidelines*



Outreach Process

- Conducted targeted stakeholder meetings
 - *Planning directors, state agencies, (non-profit & for-profit) developers, community and environmental advocates*
- Concept reflects feedback from multiple stakeholder groups
 - *Simple & predictable*
 - *“Best Practices” approach*
 - *Regionally consistent*



Feedback

We would like your feedback:

- Does this approach make sense?
- Any issues or concerns?
- Does this strike the right balance: being health protective, while promoting much needed infill development?

Webcast Participants

Email: PlanningHealthyPlaces@baaqmd.gov



Next Steps

- Incorporate comments and feedback
 - Comment deadline: April 1, 2016
 - Feedback: PlanningHealthyPlaces@baaqmd.gov or jwinkel@baaqmd.gov
- Post final version of Planning Healthy Places and maps on webpage
- Implementation
 - Assistance to local governments, stakeholders
 - On-going outreach
 - Regular updates to maps



Thank you

Planning Healthy Places

www.baaqmd.gov/PlanningHealthyPlaces

PlanningHealthyPlaces@baaqmd.gov

Contact: Jackie Winkel jwinkel@baaqmd.gov

